

 **MODERN PLANT**

*Pure Freude
an Wasser*

GROHE




new

PERFECT MATCH

INTRODUCING GROHE KITCHEN SINKS
MADE TO MATCH IN FORM AND FUNCTION



Think of a space where people come together. A space where any kind of mood can be translated into an endless number of delicious dishes and drinks. A space where you not only express your individuality, but also try new recipes and explore millions of tastes.





CONTENTS

INTRODUCING GROHE KITCHEN SINKS	08
PRODUCT FEATURES, FINISHES AND MOUNTING TYPES	10
QUALITY THAT LASTS A LIFETIME	16
MANUFACTURING PROCESS	18
PRODUCT LINES	22
K1000	24
K800	30
K700 UNDERMOUNT	36
K700	40
K500	48
K400+	52
K400	56
K300	60
K200	64
PERFECT MATCH	68



INTRODUCING GROHE KITCHEN SINKS

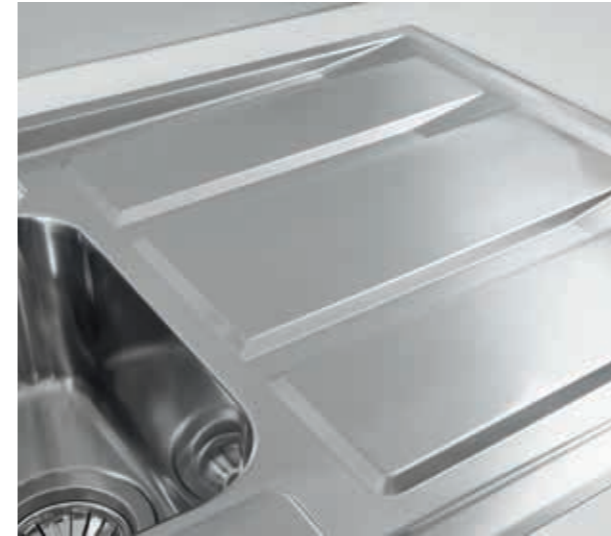
Add up how much time you spend at your kitchen sink. Filling pots, preparing veg, washing up after a big meal. It's a place you will stop at countless times each day, so why not choose a sink that exceeds your needs in terms of quality, design and features?

GROHE sinks have been designed to fit every type of kitchen scheme, with a range of innovative, modern designs perfect for your space. You will find compact models with integrated drainers, large double sinks for when you need to spread out, and chic built-in sinks that fit flush to your worktop. With features like the GROHE QuickFix system and reversible designs as standard, you can have your new GROHE sink installed in minutes with no fuss or hassle.

We are also confident that you will love the special features on offer, from the noise-reducing GROHE Whisper insulation to the automatic waste that means never plunging your hand into dirty water again. With a sink from GROHE you'll notice the difference, making every time you use your sink less of a chore.



PRODUCT FEATURES, FINISHES AND MOUNTING TYPES



GROHE StarLight

All GROHE sinks use stainless steel graded above the industry average, so you can be confident of their quality and durability. Our innovative brushing technique means that the sparkling steel surface is ultra smooth for easier cleaning.



GROHE QuickFix

Install your sink swiftly and easily thanks to the GROHE QuickFix system (kit supplied). With two pre-punched tap holes most of our sinks are easily reversible, giving you the flexibility you need for any design scheme.



GROHE Whisper

Shhh! A special insulation on the underside of the sink means that noise from running water and handling pots and pans is reduced to a minimum.

Whatever the design of your kitchen you will find a GROHE sink that complements it beautifully. The range includes standard built-in models, flush-mounted, under-mounted and flat-edge models, with eight different designs, from timeless to crisply minimal.

You can choose from two different stainless steel grades – AISI 304 and AISI 316 – according to your specifications too, so whether you are kitting out a compact kitchen or looking for a centrepiece sink for your island unit GROHE has a model that is just right, and at a price point that suits.

AISI 304

On every sink model GROHE uses AISI 304 stainless steel, exceeding the quality standard of the industry. Thanks to the high percentages of chrome and nickel it contains, AISI 304 steel gives a particularly bright finish and makes the products durable against rust and corrosion.

AISI 316 (MARINE STEEL)

With AISI 316 available on the K400+ series, GROHE offers a durable solution even for regions with a salty, rust-causing climate. Also known as the “marine steel”, AISI 316 is mainly used in the shipbuilding or chemical industries. Famous for its high percentages of chrome, nickel and molybdenum, the steel is extremely resistant to rust and corrosion and even acids or chlorine.

PATENTED BRUSHING TECHNIQUE (GROHE SATIN FINISH)

The K300 – K1000 series are treated with special vegetable fibres (Tampico) that give the sinks their characteristic extra-fine satin finish that is highly elegant and functional. GROHE’s patented brushing technique creates a stainless steel surface that is smoother and less porous than many other brands, making cleaning your sink easier and significantly enhancing its durability.



SPACIOUS BOWLS

Thanks to our innovative manufacturing techniques, all GROHE sinks feature bowls with a generous depth of 16 cm, maximizing space for washing large pots with ease.



WASTE FITTING WITH REMOTE CONTROL

Supplied with each model, the remote control fitting allows you to empty the sink without reaching into the dirty water – clean and convenient.



STANDARD BUILT-IN

Traditional built-in with a vertical 8mm edge.



FLAT-EDGE

An original edge with an inclined 3mm high profile, matching an extreme elegance with ease of installation.



UNDERMOUNT

Sleek and contemporary, ideal for installation under the worktop.



FLUSH-MOUNT

The product is sunk with a 1.5mm deep recess making it perfectly flush with the worktop. Alternatively, it can also be installed on the worktop.

FEEL THE BENEFITS INNOVATIVE FEATURES AND FUNCTIONS

We can't claim to make washing up a joy, but thanks to the smart, useful features of every GROHE sink, we certainly believe that we can make your sink somewhere you are happy to spend some time. With a GROHE sink, cleaning is easier, draining the bowl can be done remotely, and even the sound of the water running is minimized. Just select your ideal size and style – installation is effortless and the benefits speak for themselves.

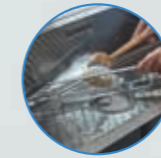


Pre-punched tap holes

Each GROHE sink comes with two pre-punched tap holes, meaning no additional tools are required and some sinks are reversible and can be installed as either left- or right-handed option.

Overflow

The overflow, available on all GROHE sinks, avoids any spillage of water in case the taps are inadvertently left open. The perimetric solution available on some models improves the look, thanks to its squared-out and essential shape.



Spacious bowls

Thanks to our innovative manufacturing techniques, all GROHE sinks feature bowls with a generous depth of min. 16 cm, maximizing space for washing large pots with ease.



Waste fitting with remote control

GROHE sinks are equipped with a 3.5" waste fitting and practical strainer plug that prevents solids and leftovers from flowing away with the waste water. The steel cap available on some models adds elegance to the bowl and hides any residue collected in the underlying basket.



Siphon included

For a quick and hassle-free installation each sink comes with an under-sink siphon complementing the scope of delivery and guaranteeing an ALL IN ONE solution.

Water drainage

Drainage from the bowl's base and drainers is an important feature, always well cared for on GROHE sinks. In the squared-out, flat-bottomed sinks, good drainage is ensured by the elegant diamond-shaped creases that make the water flow away more easily.

QUALITY THAT LASTS A LIFETIME

GROHE's reputation for quality of course extends to every sink in our range. With steel thicknesses ranging from 0.6 mm on the entry price segment to 1 mm on the premium ranges, each model uses steel graded above industry standards, and our patented brushing process creates a super-smooth surface that is easy to clean. For additional reassurance, each GROHE sink comes with a five year warranty, just like our taps.



MANUFACTURING PROCESS

GROHE's collection of sinks covers every base, from entry-level models to sophisticated, minimalist designs. The way your sink is made will affect how durable, spacious and sleek it looks. Here are the three manufacturing types we use:

MOULDED SINKS

Each sink is moulded from a single sheet of high-quality stainless steel, using a press mould. Taps and waste holes are punched afterwards. This method creates sturdy sinks in even complex shapes, meaning a sink that is both durable and affordable.

MOULDED-WELDED SINKS

The sink's frame and bowl are press moulded in high-quality stainless steel before being welded together. This process allows for deeper bowls, more vertical walls inside and a slimmer radius between bowl and frame, for a sleek, modern look.

BENDED-WELDED SINKS

High-quality steel is laser cut to measure before being bent into the bowl shape. This bowl is then welded to the sink's frame. This method allows for crisper internal angles in the bowl with a very narrow radius – ideal for minimal sink designs. As there is no mould, the steel stays smoother and retains its original thickness, even at the bottom of the bowl.



PRODUCT LINES

Customize your kitchen space by choosing the perfect GROHE sink for you. Within our K-series, we offer you eight beautifully designed and durable sinks including 1, 1.5 or 2 bowl options. Various mounting types from built-in to undermount are available for your individual taste.



K500



K1000



K800



K400+



K400



K700 UNDERMOUNT



K700



K300



K200

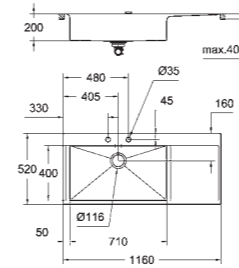
30 270 ALO
Sink Mixer, high spout
with pull-out dual spray

GROHE K1000 SERIES

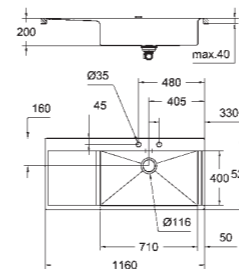
A superior sink designed for the demands of contemporary kitchens, the K1000 features a welded design with a diamond-shaped bottom, as well as a generous draining area. Its architectural style is matched by useful features like an included siphon and automatic waste fitting. It can be flush-mounted or built-in.

31 581 SD0
K1000 Kitchen Sink
Stainless steel kitchen sink
with 1 bowl





31 581 SD0
K1000 Kitchen Sink
Stainless steel kitchen sink
with 1 bowl



31 582 SD0
K1000 Kitchen Sink
Stainless steel kitchen sink
with 1 bowl

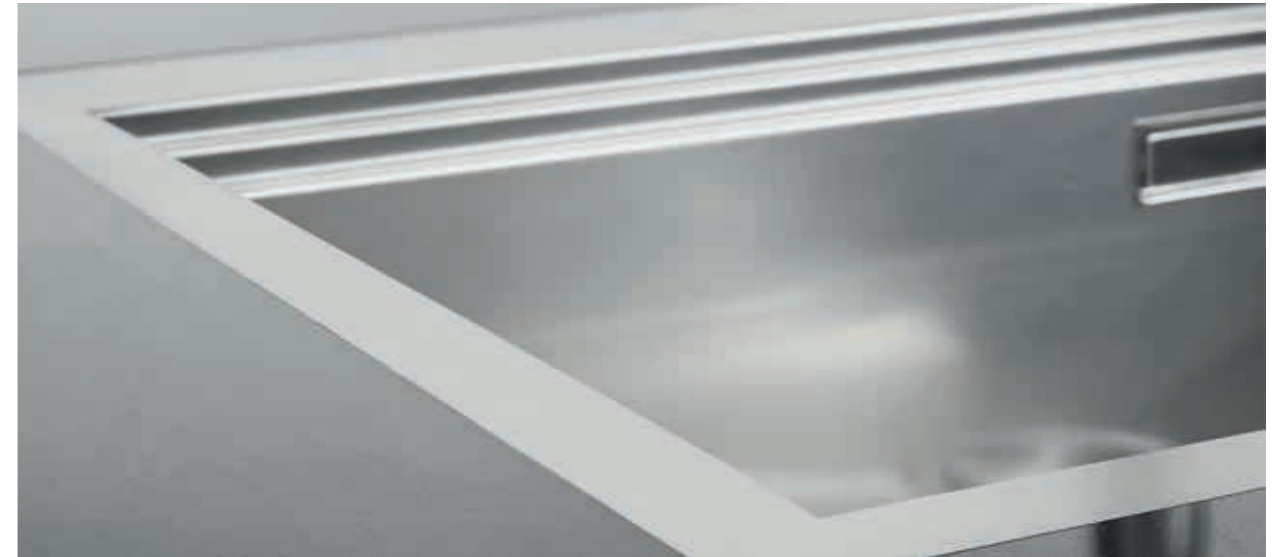


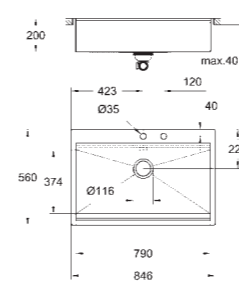
32 950 DC0
Professional Sink Mixer

GROHE K800 SERIES

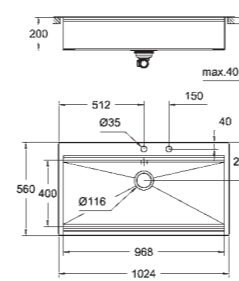
Select a premium sink for your kitchen, in terms of both design and durability, with the K800. Select from 1 or 2 bowls, flush-mounted or built-in, and enjoy the added benefits of its space-saving siphon and automatic waste fitting with stylish waste basket cover.

31 584 SD0
K800 Kitchen Sink
Stainless steel kitchen sink
with 1 bowl





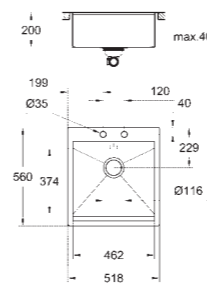
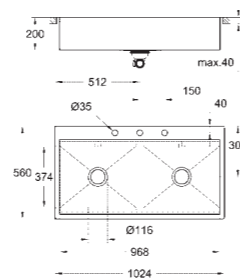
31 584 SD0
K800 Kitchen Sink
Stainless steel kitchen sink
with 1 bowl



31 586 SD0
K800 Kitchen Sink
Stainless steel kitchen sink
with 1 bowl



31 585 SD0
K800 Kitchen Sink
Stainless steel kitchen sink
with 2 bowls



31 583 SD0
K800 Kitchen Sink
Stainless steel kitchen sink
with 1 bowl

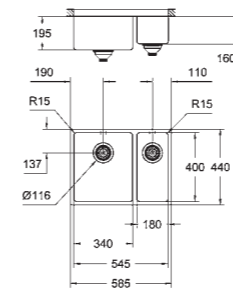


GROHE K700 UNDERMOUNT SERIES

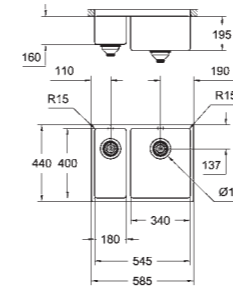
Get the uncluttered, architectural look with the K700 undermounted sink. With a deeper bowl and soft edges, it is designed to fit under your counter for a seamless, modern finish. Available in 1 or 1.5 bowl versions with bigger bowl on the left or right side.

31 577 SD0
K700 Undermount Kitchen Sink
Stainless steel kitchen sink
with 1.5 bowls

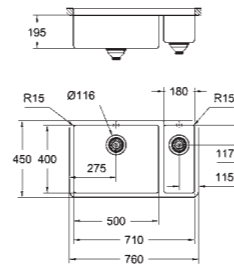
31 255 000
Sink Mixer, high spout



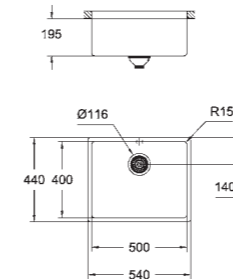
31 577 SD0
K700 Undermount Kitchen Sink
Stainless steel kitchen sink
with 1.5 bowls



31 576 SD0
K700 Undermount Kitchen Sink
Stainless steel kitchen sink
with 1.5 bowls



31 575 SD0
K700 Undermount Kitchen Sink
Stainless steel kitchen sink
with 1.5 bowls



31 574 SD0
K700 Undermount Kitchen Sink
Stainless steel kitchen sink
with 1 bowl



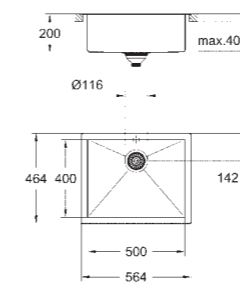
GROHE **K700 SERIES**

Perfect for modern, minimalist kitchens, the K700 cubistic sink offers a deeper, larger bowl with radiant edges and a diamond-shaped bottom. Ideal for larger kitchens, the sink is available for standard built-in installation or flush-mounting and three different sizes.

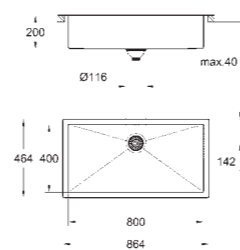
30 294 000
Professional Sink Mixer

31 579 SD0
K700 Kitchen Sink
Stainless steel kitchen sink
with 1 bowl

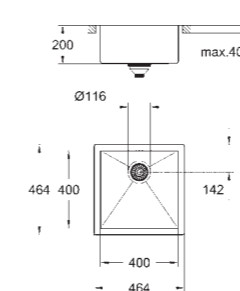




31 579 SD0
K700 Kitchen Sink
Stainless steel kitchen sink
with 1 bowl



31 580 SD0
K700 Kitchen Sink
Stainless steel kitchen sink
with 1 bowl



31 578 SD0
K700 Kitchen Sink
Stainless steel kitchen sink
with 1 bowl





40 953 000
Waste Set
with pop-up and overflow

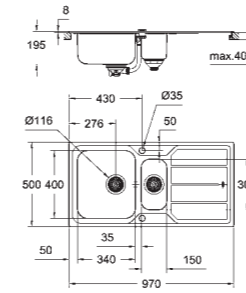
For even more comfort you can also incorporate the waste set with pop-up and overflow.

Fits to kitchen sinks series:
K700 and K700 Undermount.

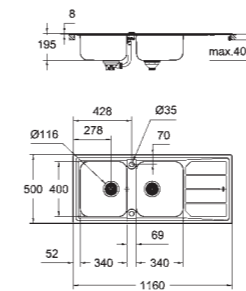
GROHE **K500 SERIES**

In tough stainless steel, with welded finish for added durability, the K500 sink offers contemporary design chic with practical features. Choose a 1 or 1.5 bowl (reversible) model with drainer and automatic waste fitting.

31 573 SD0
Minta Sink Bundle



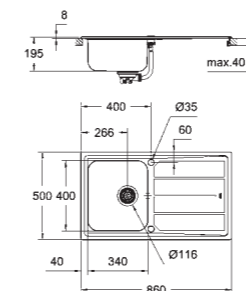
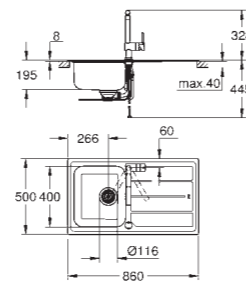
31 572 SD0
K500 Kitchen Sink
Stainless steel kitchen sink
with 1.5 bowls and reversible drainer



31 588 SD0
K500 Kitchen Sink
Stainless steel kitchen sink
with 2 bowls and reversible drainer



31 573 SD0
Minta Sink Bundle
Kitchen Tap and Sink Bundle
consisting of:
Stainless steel kitchen sink K500
Single lever sink mixer Minta
with pull-out mousseur



31 571 SD0
K500 Kitchen Sink
Stainless steel kitchen sink
with 1 bowl and reversible drainer

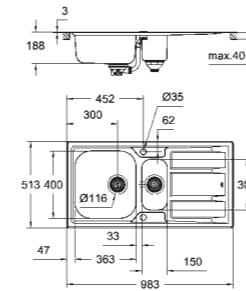


GROHE K400+ SERIES

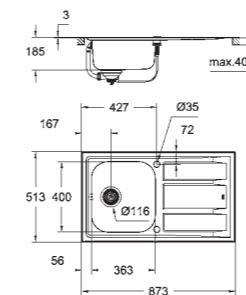
30 273 DC1
Sink Mixer, medium spout
with pull-out dual spay

With the K400+ sink that uses AISI 316 grade stainless steel, GROHE offers an additional solution even for regions with a salty, rust-causing climate. The K400+ series comes with 1 or 1.5 bowl options. Both models are reversible and offer a 4 mm flat edge detail for a sleeker finish.

31 569 SD0
K400+ Kitchen Sink
Stainless steel kitchen sink
with 1.5 bowls and reversible drainer



31 569 SD0
K400+ Kitchen Sink
Stainless steel kitchen sink
with 1.5 bowls and reversible drainer



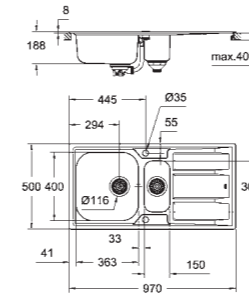
31 568 SD0
K400+ Kitchen Sink
Stainless steel kitchen sink
with 1 bowl and reversible drainer



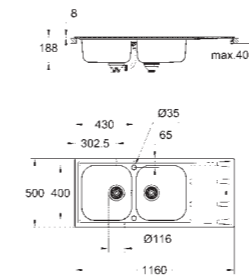
GROHE **K400 SERIES**

Give your kitchen a design-orientated edge with the K400 sinks. Sturdy and practical, but with distinctive design flair, the K400 sinks come in 1, 1.5 or 2 bowl options, with drainer. All models are reversible and come with standard built-in edge and remote waste.

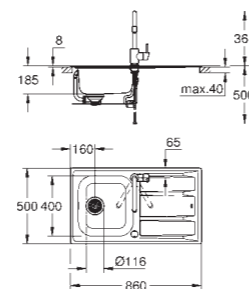
31 570 SDO
Concetto Sink Bundle



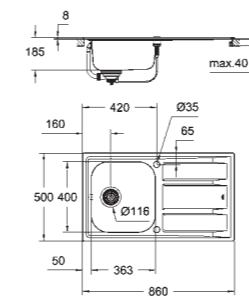
31 567 SD0
K400 Kitchen Sink
Stainless steel kitchen sink
with 1.5 bowls and reversible drainer



31 587 SD0
K400 Kitchen Sink
Stainless steel kitchen sink
with 2 bowls and reversible drainer



31 570 SD0
Concetto Sink Bundle
Kitchen Tap and Sink Bundle
consisting of:
Stainless steel kitchen sink K400
Single lever sink mixer Concetto
with pull-out mousseur



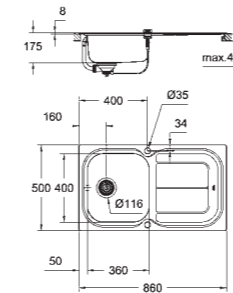
31 566 SD0
K400 Kitchen Sink
Stainless steel kitchen sink
with 1 bowl and reversible drainer



GROHE K300 SERIES

Created for modern lifestyles, the smooth lines and soft edges of the K300 range of sinks will sit harmoniously with your kitchen. This fully reversible built-in sink comes in 1 or 1.5 bowl variations, with a drainer and automatic waste.

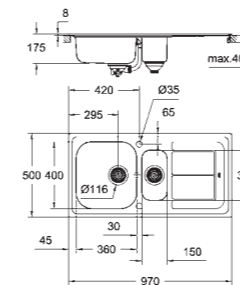
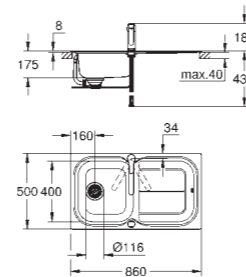
31 565 SD0
Eurosmart Sink Bundle



31 563 SD0
K300 Kitchen Sink
Stainless steel kitchen sink
with 1 bowl and reversible drainer



31 565 SD0
Eurosmart Sink Bundle
Kitchen Tap and Sink Bundle
consisting of:
Stainless steel kitchen sink K300
Single lever sink mixer Eurosmart
with swivel spout



31 564 SD0
K300 Kitchen Sink
Stainless steel kitchen sink
with 1.5 bowls and reversible drainer

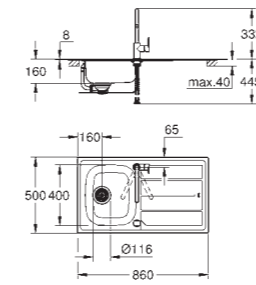


GROHE K200 SERIES

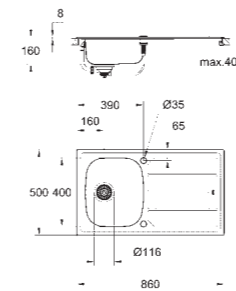
Versatile design that is a perfect fit for every home, the K200 sink is a durable, practical option for busy kitchens. With a single bowl and drainer, this model is fully reversible and comes with an automatic waste fitting for added comfort and convenience.

31 562 SD0
Bau Sink Bundle





31 562 SD0
 Bau Sink Bundle
 Kitchen Tap and Sink Bundle
 consisting of:
 Stainless steel kitchen sink K200
 Single lever sink mixer BauEdge
 with swivel spout



31 552 SD0
 K200 Kitchen Sink
 Stainless steel kitchen sink
 with 1 bowl and reversible drainer



FIND THE PERFECT MATCH SINK AND TAP IN PERFECT HARMONY

Everything about the GROHE range of sinks has been designed for a perfect fit – with your tap, with your kitchen, with your lifestyle. All of the sinks have been designed to be paired effortlessly with our kitchen taps and watersystems, both in terms of design and practicality, with comfortable proportions and no splashing.

To make it even easier to pick the right sink and tap for you, we've also created four pre-packed sink and tap bundles, so you can buy your ideal sink and tap together, hassle-free. Encompassing our most popular lines, you can select a Bau, Eurosmart, Concetto or Minta sink bundle, making design, purchase and installation an even smoother, swifter process.



K1000	K800	K700 UNDERMOUNT	K700
 EUROCUBE	 ESSENCE	 ESSENCE	 MINTA
 ESSENCE	 K7	 EUROCUBE	 EUROCUBE
 K7	 GROHE BLUE HOME PULL-OUT	 K7	 ZEDRA
 GROHE BLUE HOME PULL-OUT	 K7	 K7	 K7
 GROHE BLUE HOME	 GROHE BLUE HOME + GROHE RED MONO	 GROHE BLUE HOME + GROHE RED MONO	 K7
 GROHE RED II DUO			 GROHE BLUE HOME + GROHE RED MONO

K500	K400+ / K400	K300	K200
 MINTA	 CONCETTO	 EUROSMART	 BAUEDGE
 MINTA	 EURODISC	 EUROSMART COSMOPOLITAN	 EUROSMART
 MINTA	 EURODISC COSMOPOLITAN	 EUROSTYLE COSMOPOLITAN	

ALSO AVAILABLE AS A BUNDLE

 MINTA SINK BUNDLE 31 573 SD0	 CONCETTO SINK BUNDLE 31 570 SD0	 EUROSMART SINK BUNDLE 31 565 SD0	 BAU SINK BUNDLE 31 562 SD0
-------------------------------------	--	---	-----------------------------------

These are our design recommendations for **YOUR PERFECT MATCH**.
Of course any other GROHE kitchen tap can be combined with our kitchen sinks.



PERFECT MATCH WITH **GROHE WATERSYSTEMS** DESIGNED TO LOOK BEAUTIFUL IN YOUR KITCHEN

Discover the new dream for your kitchen and combine our kitchen sinks with GROHE Red and GROHE Blue Home watersystems to have the perfect kitchen system. Where our GROHE sink offers you the perfect preparation zone, GROHE Red and GROHE Blue Home Mono offer you the ultimate convenience of kettle hot water on tap and a source of delicious, chilled, filtered drinking water. That's what we call water enjoyment.



GROHE's kitchen sinks fit into standard cabinets and can be combined with the GROHE Blue Home cooler and the GROHE Red L-size boiler in a standard 60 cm cabinet and still leave enough space to store cleaning supplies.

GROHE: A WHOLE WORLD OF **INTELLIGENT DESIGN** FOR THE KITCHEN

Discover the many beautiful and functional taps in our wide selection. They range from sleek, minimalistic forms that are timeless in their appeal, to striking styles that make a bold design statement. And they come with many ingenious features and functions for ease and pleasure of use. For example with pull-out mousseurs and sprays which are both convenient and timesaving. Or easy-touch taps that can be operated with just a fingertip. Whatever your needs, GROHE offers you all the choice, comfort and flexibility that you could wish for.



KITCHEN BROCHURE



WATERSYSTEM BROCHURE



BLUE HOME BROCHURE



RED BROCHURE





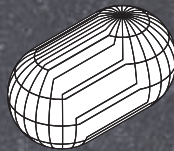
Follow us



QUALITY



TECHNOLOGY



FORTUNE®
**CHANGE
THE WORLD**
2017

DESIGN

300+
DESIGN AWARDS

SUSTAINABILITY



CSR-PREIS
DER BUNDESREGIERUNG

Winner 2017

From FORTUNE, September 15, 2017. FORTUNE is a registered trademark of Time Inc., used under license. FORTUNE and Time Inc. are not affiliated with, and do not endorse products or services of, GROHE.



MODERN PLANT

For more information about any Grohe product please contact Modern Plant. Our team of experts are on call to answer all your questions and provide you with advice to ensure your project is successful.

Web: www.tapsandshowers.ie | Email: sales@modernplant.ie | Tel: 01 461 4300