

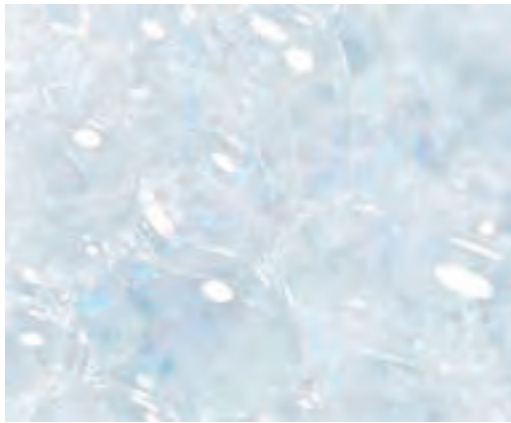


**MODERN PLANT**

HYGIENE | EN  
JVD CATALOG • 2019



THE FRENCH TOUCH





## THE FRENCH TOUCH

The French Touch is a state of mind. Rooted in French *savoir-vivre*, it reflects a desire to make each product unique. Particular attention is given to design to ensure the elegance, technicality, ergonomics and practicality which characterize French products. The importance given to reducing the ecological footprint is another of the core values of the French Touch.



*If you are looking to give meaning, offer a warm welcome, surprise and enchant through your difference and good taste, this catalogue is a gold mine of new ideas, developed by the women and men of our teams in France to captivate your guests.*

*And if you are looking to give meaning whilst being more responsible, we have designed our products in an eco-responsible way, all the way through to transport, and including strong reforestation initiatives.*

*Meaning also signifies products which are easy to clean for the well-being of your teams: in developing sustainable accessories, we obviously considered their maintenance conditions.*

*You will discover products here but beyond that, we hope to enter into a dialogue with you. So please don't hesitate to call us or send us a message. Wherever you are in the world, we have someone nearby, and we are always here to talk and listen... Together, we can move forward.*

*Oh, and if you're wondering who the "we" of JVD actually are, we are a modestly sized team of people who share the same enthusiasm, know-how and taste for innovation. Each of the professionals at JVD and myself are proud to usher you into your perusal of this catalogue.*

See you soon!

**Thierry Launois**  
Managing Director

# INNOVATION IN THE SERVICE OF WELL-BEING

The strength of JVD resides in our provision of accessories adorning hotel rooms around the world for more than 30 years. JVD accessories help to personalize hotel rooms, giving them the final touch to ensure guests' well-being. Accessories are what truly make a difference.

## VALUES AND TALENT



### SMART

Our products are designed to be used by anyone, from children to maintenance personnel to people with reduced mobility. Not only are they suited to their environments but they are also safe, practical and ergonomic.



**THE JVD GROUP HAS OPERATIONS AROUND THE WORLD THANKS TO LOCATIONS IN EUROPE, ASIA AND THE AMERICAS.**

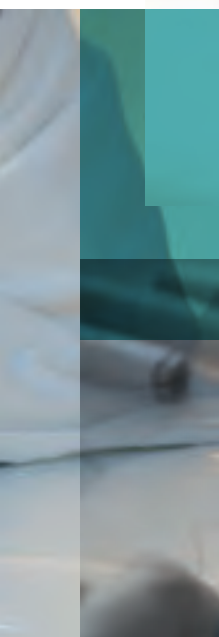


### ECO-DESIGN

Beginning with the design phase, JVD products are made to minimize their impact on the planet. From packaging to power consumption, each detail is carefully conceived to preserve the environment.

### RESPONSIBLE ENGINEERING

With paper and energy usage reduced as much as possible, fewer components and a low wattage required to switch them on, our products are eco-responsibly designed and produced.



### SERVICE ORIENTATION

Customer satisfaction is part of JVD's DNA. And so our teams work hard to guarantee impeccable quality, short turnaround times and flawless customer service.



### DESIGN

10 years ago, JVD created its own Design Department. Our teams devise products which embody the spirit of the French Touch.

### RESEARCH & DEVELOPMENT

Managed internally by our R&D Centre, each of our products is designed in accordance with our ongoing strategy of pursuing innovative solutions. Elegance, design and ergonomics are the keys to a successful product.



## OUR HISTORY

1984	1988	1991	1997	1999	2006	2007	2015	2018
Creation of JVD	JVD develops its first hand dryer and becomes a manufacturer	JVD develops its first hair dryer	JVD creates its own Engineering Department	Creation of JVD Asia subsidiary in Singapore	JVD creates its own integrated design service	Creation of JVD España subsidiary in Spain	Creation of JVD Americas in Mexico	Launch of HygiaConnect, the world's first connected hygiene platform

# COMMITMENT TO RESPONSIBILITY

Eco-responsibility has been one of JVD's pillars from the very beginning. The company's commitment on this subject only grows stronger every day and now concerns each of its different levels. JVD is dedicated to the idea of transmission and makes it a point of honour to play an active role in an ecological transition which looks out for everyone's well-being.

## BORN TO BE GREEN

You might think we're mad but, if our products lasted 20 years without you having to replace them, we would be thrilled! At JVD, we design quality products meant to withstand the test of time.

**1**

### WORKING AND PRESERVING

We have always been convinced that the strategy of today should be to improve the future of tomorrow. All the teams at JVD strive actively to think of everything and to make a real difference. From design to manufacturing, transport to use and customer service to recycling, we know that each detail counts.



**2**

### ECO-DESIGN

Whether we're talking about our next-gen jet air hand dryers which reduce energy consumption and eliminate the use of any consumables, our flow-reducing soap dispensers or our foaming soap which drops consumptions levels by four, our R&D Department endeavours to design our products to be eco-responsible.



### 3

#### RAW MATERIALS AND PARTNERS

Eco-responsibility also concerns our choice of raw materials and partners. Whenever possible, we prioritize partners located as close as possible to our production unit so as to reduce the environmental impact of our transport. For years, we have been striving to ensure that expertise endures and so encourage our suppliers' capacity for innovation. Out of concern for our social impact, we work with associations from the social and solidarity economy.



### 4

#### MANUFACTURING

All our waste is sorted and collected before being sent to a treatment and recycling centre. For example, we reuse our suppliers' cardboard boxes for our shipments, and we grind used paper and then use it as wedges for our shipped products. What about the rest? It is recycled or reused by other companies in the region!



### 5

#### LOGISTICS

Our packaging is designed with a twofold objective: to protect the integrity of the transported goods and to serve as an installation diagram. These simple, sensible optimizations further reduce our carbon footprint.



### 6

#### COMBATING PLANNED OBSOLESCENCE

At JVD, our products are designed and tested to be repairable and to repair them. Our appliances' spare parts are available for 10 years. Quality products meant to be used and to run for the long term.

**DID  
YOU  
KNOW?**



**MORE THAN  
16,000  
TREES PLANTED SINCE  
JANUARY 2018**

GO TO PAGE 8 TO LEARN MORE ABOUT OUR INITIATIVE.

# GOING EVEN FURTHER TOGETHER

## PRESERVING IS GREAT, BUT REBUILDING IS EVEN BETTER!

Although we had always worked to preserve the environment and reduce our footprint as much as possible, it was time for us to move on to the next step and become a real actor for ecological restoration. We also wanted to help spread our values by engaging our clients in this shared outlook. This is why we reached out to the association Planète Urgence and established a partnership with them to fight deforestation in Indonesia.

## A VERY SIMPLE MECHANISM

It couldn't be any simpler: for each hand dryer purchased from the Air range (Exp'air, Stell'air, Copt'air and Sup'air), a tree is planted!



## INDONESIAN MANGROVES

Indonesia is home to the largest expanse of mangroves in the world, but it has been on the decline for decades and its gradual disappearance is hurting not only coastal species but also populations whose livelihoods come primarily from fishing. A whole ecosystem is in danger and needs to be protected.



# 16 000

**THE NUMBER OF TREES PLANTED**  
SINCE WE LAUNCHED THE OPERATION,  
1 HAND DRYER = 1 TREE.

# CONTENTS

**DISCOVER OUR WIDE RANGE OF PRODUCTS SUITED TO YOUR EVERY NEED, TO FIT OUT YOUR COMMON AREAS REGARDLESS OF YOUR CONSTRAINTS.**



***P.13 > P.24***

**HAND DRYERS**

***P.25 > P.27***

**SWIMMING POOL  
HAIR DRYERS**

***P.28 > P.34***

**PAPER  
DISPENSERS**

***P.35 > P.40***

**SOAP  
DISPENSERS**

***P.41 > P.43***

**AIR  
FRESHENERS**

***P.44 > P.46***

**ACCESSORIES**

***P.47 > P.55***

**BINS**

***P.56 > P.60***

**ASHTRAYS**

***P.61 > P.65***

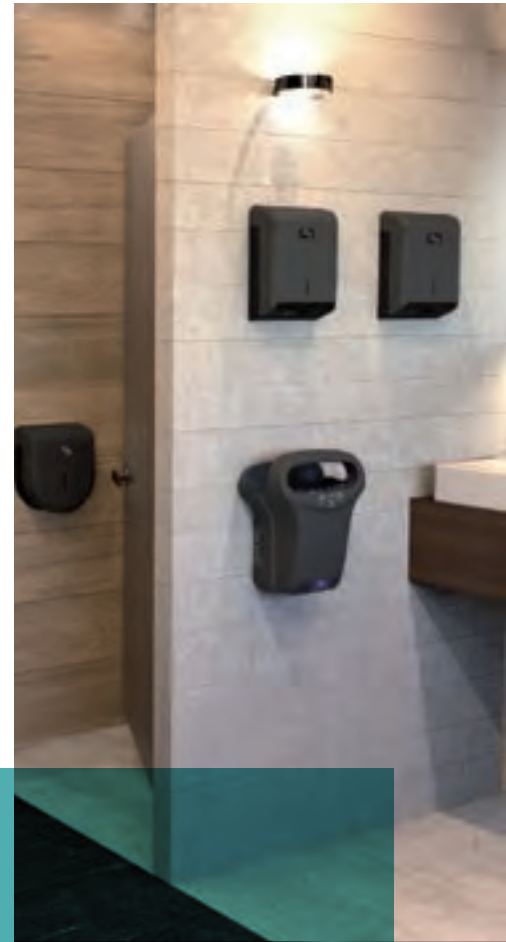
**FLYING INSECT  
KILLERS**

# RANGES

JVD offers a broad selection of equipment, lines and colours to adapt to your environment and make it unique. Thanks to our mastery of product design to production, JVD is the only manufacturer able to offer matching sets ranging from hand dryers to toilet roll dispensers by way of soap dispensers.

## **BLACK COLLECTION RANGE**

*Black has the virtue of endowing an object with a more qualitative value. Whatever the ambience of the place, black products can fit in easily (and can be either discreet or highly visible). The matte aspect amplifies the qualitative side of the product and makes the solution less dirty and more scratch resistant. Ever in pursuit of solutions which can minimize our environmental impact, the black color has given us the opportunity to use recycled plastic.*



## **METAL RANGE**

*The use of stainless steel and simple lines for this range gives it a robust appearance. Conversely, the opening for a more carefully worked view of the levels adds a touch of refinement to the design. The final solution is a perfect match for heavy traffic locations.*

## **YALISS RANGE**

*The more pronounced character of the Yaliss range seeks to give your washrooms a new image between gentleness and liveliness. The products provide new responses to broader requirements: larger capacities, universal or removable cores and improved hygiene, whilst retaining all the qualities of the Cleanline range (ease of use, personalization, etc.). To date, this is the most complete range for fitting out your washrooms.*



## **CLEANLINE RANGE METAL GREY**

*The metallic finish is essential, classic and highly valued. This range personalizes and enhances anywhere it is installed. It's truly the finishing touch! Rarely discreet, the use of light and sheen serves to underscore the careful design of the products.*



## **CLEANLINE RANGE WHITE**

*The Cleanline range was designed to be both classic and timeless. Its rounded shapes and straight sides allow it to fit seamlessly and discreetly into any type of washroom. Its bevelled edges endow it with modernity and character. Its charcoal grey base seems to lighten up the volume. The range's success hinges on the possibility of personalizing the appliances with our clients' logos, as well as their simplicity and practicality.*



## **KIDS RANGE**

**SEE  
P.12**

# THE KIDS RANGE

The purpose of our Kids range is to help children to learn the basics of hygiene from a very young age. By making the experience of washing and drying their hands more enjoyable, JVD provides a comprehensive solution, suitable for environments visited by children. Thanks to our powerful yet quiet hand dryers, JVD also helps to keep washrooms clean, with no wet paper roll on the floor and no clogged pipes. By limiting their use of paper products, kids can also participate in the creation of a greener, more sustainable future by reducing the carbon footprint associated with using paper.



## HAND DRYER EXP'AIR

REF 8 11 791KIDS

Exp'air Kids



## HAND DRYER SUP'AIR

REF 8 11 1056KIDS

Sup'air Kids



## A WORD FROM THE DESIGNER

The Kids range has long been a part of the JVD portfolio. What could be more obvious than to bring a little fun into areas where children spend time. Two ingredients are needed: colour and a sense of escape... No need to explain the choices: the kids get on board straight away if the spirit is cheerful! The world of the savannah is exotic and makes for a great way to inject a playful, entertaining spirit into a place. "Disguising" our products helps to forge a relationship with the object. Each child can now just enthusiastically ask for water from the sink, soap from the dispenser and air from the hand dryer... By adding an educational sign, you can push the concept of animals helping kids to wash their hands. The savannah is also a world which is conducive to creating new characters and so can continue to bring life into our washrooms in the future...

Jean-Guy de Russé

## SOAP DISPENSERS

REF 8 44 478KIDS

Cleanline Foaming  
Soap Dispenser Kids

REF 8 44 479KIDS

Cleanline Gel Soap  
Dispenser Kids



### Included in the Kids Pack:

Educational sign to guide children when washing their hands.  
Elephant PVC sign to place behind the tap.



© Hisson Lu

# ***HAND DRYERS***

# HAND DRYERS

A hand dryer should not be chosen at random. Whether your constraints relate to usage, maintenance, noise or vandalism resistance, we have a large array of equipment suited to your environment.

## VANDALISM RESISTANCE

In some places, special attention needs to be given to vandalism resistance. Standard NF EN 62262 provides a clear interpretation of this level of resistance with the IK index. IK10 is the highest level of resistance. A device of this type is able to tolerate at least a blow from a 5 kg sledgehammer. Devices with an aluminium or steel cover are even more resistant.

## MAINTENANCE

Paper rolls require flawless logistics to prevent them from running out. Some hand dryers require no maintenance while others have a water recovery tray which needs to be emptied regularly and air filters which need to be replaced or cleaned periodically.

## ECOLOGICAL FOOTPRINT

It takes 17 trees to produce one tonne of paper. Its manufacturing and transport then generate significant amounts of CO<sup>2</sup>. For example, the French leader in paper consumables generates 30,000 tonnes of CO<sup>2</sup> annually, just to transport its paper within France. In this respect, hand dryers are the ideal solution for reducing your ecological footprint. Next-gen jet air hand dryers consume very little energy, and the absence of consumables renders the impact of transport anecdotal at best.

## HOT OR COLD AIR

If the washroom in question has little to no heating, a cold sensation during hand drying can be unpleasant. And so we recommend opting for a hand dryer which uses evaporation or pulsed air with a heating element.

## NOISE

The sound of a hand dryer can become a nuisance if located nearby an office or restaurant dining room. Most hot air hand dryers are relatively quiet. Some jet air hand dryers also manage to combine power with a low noise level.



## USAGE LEVEL

A hand dryer should provide a solution which is compatible with the level of usage of the washroom. For places with little usage (< 50 visits daily), all three solutions are possible. For places with normal usage (50-250 visits daily), the cost of paper becomes prohibitive. For places with high usage (250-400 visits daily), jet air hand dryers are the only solution capable of guaranteeing cost control and a fast drying time. Lastly, for places with intensive usage (> 400 visits daily), the chosen hand dryer should have a brushless motor or an induction motor.



**17**  
**trees**

needed to make  
one tonne of paper



**IK10**

A device of this type  
is able to tolerate at  
least a blow from a  
5 kg sledgehammer

# CHOOSING THE RIGHT HAND DRYER



	EXP'AIR	STELL'AIR	ALPHADRY	AIRWAVE	COPT'AIR	SUP'AIR	HURRICANE	MASTER	TORNADO	OURAGAN	ZEPHYR
<b>ANTI-VANDALISM</b>	☆☆☆ Aluminium cover	☆☆ IK10 ABS	☆☆ IK10 ABS	☆☆ IK10 ABS	☆☆☆☆ Aluminium cover	☆ IK9 ABS	☆☆☆☆ Steel cover	☆☆☆☆ Aluminium cover	☆☆ IK10 PC-ABS	☆☆☆☆ Steel cover	☆☆ IK10 PC-ABS
<b>PEOPLE WITH REDUCED MOBILITY OR SMALL CHILDREN</b>	☆☆☆☆				☆☆ Accessible height	☆☆ Accessible height	☆☆ Accessible height	☆☆ Accessible height	☆☆ Accessible height	☆☆ Accessible height	☆☆ Accessible height
<b>DRYING TIME</b>	☆☆☆ 10-15 sec	☆☆☆☆ 10-15 sec	☆☆☆☆ 10-15 sec	☆☆☆☆ 10-15 sec	☆☆☆☆ 10-15 sec	☆☆☆☆ 10-15 sec	☆☆☆☆ 10-15 sec	☆☆ 20-30 sec	☆☆ 20-30 sec	☆☆ 20-30 sec	☆☆ 20-30 sec
<b>HOT AIR</b>	No	No	Yes, activatable heating element	Yes, automatically activatable	Yes, in S version	No	Yes, heating element	Yes, heating element	Yes, heating element	Yes, heating element	Yes, heating element
<b>USAGE</b>	High (Exp'air Intensive (Exp'air+))	High	Intensive	High	High	High	High	Intensive	Intensive	Average	Average
<b>NOISE LEVEL</b>	☆☆ 75 dB	☆☆☆☆ 73 dB	☆ 78 dB	☆ 77 dB	☆ 80 dB	☆☆ 75 dB	☆ 80 dB	☆☆☆☆ 70 dB	☆☆☆☆ 70 dB	☆ 78 dB	☆☆☆☆ 69 dB
<b>HYGIENE</b>	☆☆☆☆ Copper filter Antibacterial Coating Water recovery tray	☆☆☆☆ Copper filter Antibacterial Coating Water recovery tray	☆☆☆☆ HEPA filter Water recovery tray	☆☆ Air filter Water recovery tray	☆☆ Antibacterial Filter (optional)	☆☆ Antibacterial Filter (optional)					
<b>MAINTENANCE</b>	☆☆ Clean filter & recovery tray	☆☆ Clean filter & recovery tray	☆☆ Clean filter & recovery tray	☆☆ Clean filter & recovery tray	☆☆☆☆ Clean filter (optional)	☆☆☆☆ Clean filter (optional)	☆☆☆☆ No specific maintenance	☆☆☆☆ No specific maintenance	☆☆☆☆ No specific maintenance	☆☆☆☆ No specific maintenance	☆☆☆☆ No specific maintenance
<b>NET WEIGHT</b>	7 kg	6 kg	10 kg	4.7 kg	4.3 kg	3.4 kg	5.8 kg	3.8 kg	3.2 kg	6.25 kg	1.8 kg
<b>HEIGHT (mm)</b>	430	531	685	685	285	292	280/287	290	302	280	244
<b>WIDTH (mm)</b>	340	340	300	300	232	215	200/205	265	265	255	213
<b>DEPTH (mm)</b>	234	260	220	220	194	193	180	149	149	140	204
<b>CERTIFICATIONS</b>	CE - IP44 - Class II	CE - IP44 - Class II	CE - IP24 - Class I	CE - IP24 - Class II	CE - IP24 - Class II	CE - IP24 - Class II	CE - IP21 - Class I	CE - IP23 - Class II	CE - IP23 - Class II	CE - IP21 - Class I	CE - IP23 - Class II

# HAND DRYERS

## EXP'AIR+ PULSED AIR

ECO  
CONCEPTION



MADE  
IN FRANCE



**NEW**

### PRODUCT ADVANTAGES



Suitable for intensive usage (brushless motor)



Accessible by people with reduced mobility and small children



Water recovery tray with a capacity of 600 ml

### CHARACTERISTICS

- Drying time: 10-15 seconds
- Noise level: 78 dB
- Rated power: 1200 W
- Power supply: 220-240 V - 50 Hz
- Class II - IP44 IK10
- Brushless motor
- 5 year warranty
- Dim.: 343 (L) x 430 (H) x 237 (D) mm



REF 8 11 1602  
Exp'air+  
Black



REF 8 11 1601  
Exp'air+  
Grey



REF 8 11 1600  
Exp'air+  
White

+ REF 5 90 2014  
Bactericidal copper filter



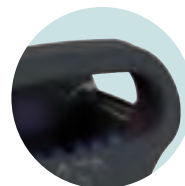
#### HYGIENIC

INTEGRATED BACTERICIDAL COPPER FILTER AND WATER TANK, ANTIBACTERIAL SURFACE TREATMENT



#### DIRECT DRAINAGE

CONNECTION TO SEWER SYSTEM POSSIBLE VIA THE DRAINAGE KIT (INCLUDED)



#### ANTI-VANDALISM

ALUMINIUM COVER



Scan me  
to play the video

# HAND DRYERS

## EXP'AIR PULSED AIR

ECO CONCEPTION MADE IN FRANCE

### PRODUCT ADVANTAGES

- **35%** more economical than competitors' models
- **50%** quieter than competitors' models
- **100%** accessible by people with reduced mobility and small children

### CHARACTERISTICS

- Drying time: 10-15 seconds
- Usage: high
- Noise level: 75 dB
- Anti-vandalism: aluminium cover
- Illuminated drying zone
- Bactericidal copper filter included
- Water recovery tray with a capacity of 600 ml
- Rated power: 800 W
- Power supply: 230 V - 50 Hz
- CE - Class II - IP44
- 3 finishes: Black, White or Metal Grey
- **3 year warranty**
- Dim.: 343 (L) x 430 (H) x 237 (D) mm



REF 8 11 1376  
Exp'air Automatic  
Aluminium Epoxy  
Black

REF 8 11 822  
Exp'air Automatic  
Aluminium Epoxy  
Grey

REF 8 11 791  
Exp'air Automatic  
Aluminium Epoxy  
White

## PACK EXP'AIR KIDS

**NEW** ECO CONCEPTION MADE IN FRANCE

### PRODUCT ADVANTAGES

- **35%** more economical than competitors' models
- **50%** quieter than competitors' models
- **100%** accessible by people with reduced mobility and small children

### CHARACTERISTICS

- Drying time: 10-15 seconds
- Usage: high
- Noise level: 75 dB
- Anti-vandalism: aluminium cover
- Illuminated drying zone
- Bactericidal copper filter included
- Water recovery tray with a capacity of 600 ml
- Rated power: 800 W
- Power supply: 230 V - 50 Hz
- CE - Class II - IP44
- White finish
- **3 year warranty**
- Dim.: 343 (L) x 430 (H) x 237 (D) mm

### THE EXP'AIR KIDS PACK INCLUDES:

- Exp'air Kids
- Cleanline Gel Kids (free)
- Elephant PVC Sign (free)
- Educational Sign (free)



REF 8 11 791KIDS  
Exp'air Kids



REF 8 44 479KIDS  
Cleanline Gel Kids  
Included in the Kids Pack



Elephant PVC Sign\* to place behind the tap



Educational Sign\* to guide children when washing and drying their hands

\* Included in the Kids Pack

# HAND DRYERS

## COPT'AIR PULSED AIR

ECO  
CONCEPTION



MADE  
IN FRANCE



**NEW**

### PRODUCT ADVANTAGES



**100%**  
new drying  
sensations with  
a cyclonic effect



**65%**  
more economical  
than competitors'  
models



**100%**  
anti-vandalism:  
aluminium cover

### CHARACTERISTICS

- Drying time: 10-15 seconds
- Usage: high
- Noise level: 80 dB
- Anti-vandalism: IK10 aluminium cover
- Illuminated drying zone
- Optional antibacterial filter (not available for Copt'air S): 5 10 1899
- Hot air: automatic heating element in S version
- Rated power:  
Copt'air Automatic: 500 W  
Copt'air S Automatic: 1500 W
- Power supply: 220-240 V - 50 Hz
- CE - Class II - IP24
- 3 finishes: Black, White or Metal Grey
- **3 year warranty**
- Dim.: 232 (L) x 285 (H) x 194 (D) mm



Scan me  
to play the video



REF 8 11 1377  
Copt'air Automatic  
Aluminium Black



REF 8 11 1168  
Copt'air Automatic  
Aluminium Metal Grey



REF 8 11 1167  
Copt'air Automatic  
Aluminium White

**NEW**



REF 8 11 1624  
Copt'air S Automatic  
Aluminium Black

REF 8 11 1623  
Copt'air S Automatic  
Aluminium Metal Grey

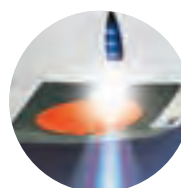
REF 8 11 1622  
Copt'air S Automatic  
Aluminium White



**INNOVATION**  
ROTATING NOZZLE FOR  
INCREASED EFFICIENCY AND  
NEW SENSATIONS



**ANTI-VANDALISM**  
ALUMINIUM COVER



**ERGONOMIC**  
ILLUMINATED DRYING ZONE  
WITH SWEEPING PULSED AIR

# HAND DRYERS

## SUP'AIR PULSED AIR

ECO CONCEPTION MADE IN FRANCE

### PRODUCT ADVANTAGES

- Ultra-fast drying
- Very low energy consumption
- Compact
- Excellent quality-price ratio
- Can easily replace an existing hand dryer

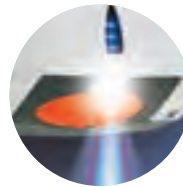
### CHARACTERISTICS

- Drying time: 10-15 seconds
- Usage: high
- Noise level: 75 dB
- Anti-vandalism: IK9 ABS cover
- Illuminated drying zone
- Antibacterial filter (optional)
- Rated power: 500 W
- Power supply: 220-240 V - 50 Hz
- CE - Class II - IP24
- 2 finishes: White or Metal Grey
- 3 year warranty
- Dim.: 232 (L) x 285 (H) x 194 (D) mm



REF 8 11 1056  
Sup'air Automatic  
White

REF 8 11 1057  
Sup'air Automatic  
Aluminium Metal  
Grey



**ILLUMINATION**  
OF THE DRYING ZONE

+ REF 5 30 1899  
Antibacterial Filter



Scan me  
to play the video

## PACK SUP'AIR KIDS

**NEW** ECO CONCEPTION MADE IN FRANCE

### PRODUCT ADVANTAGES

- Ultra-fast drying
- Very low energy consumption
- Compact
- Excellent quality-price ratio
- Can easily replace an existing hand dryer

### CHARACTERISTICS

- Drying time: 10-15 seconds
- Usage: high
- Noise level: 75 dB
- Anti-vandalism: IK9 ABS cover
- Illuminated drying zone
- Antibacterial filter (optional)
- Rated power: 500 W
- Power supply: 220-240 V - 50 Hz
- CE - Class II - IP24
- 1 finish: White
- 3 year warranty
- Dim.: 232 (L) x 285 (H) x 194 (D) mm

### THE SUP'AIR KIDS PACK INCLUDES:

- Sup'air Kids
- Cleanline Gel Kids (free)
- Elephant PVC Sign (free)
- Educational Sign (free)



REF 8 11 1056KIDS  
Sup'air Kids



REF 8 44 479KIDS  
Cleanline Gel Kids  
Included in the Kids Pack



Elephant PVC Sign\* to  
place behind the tap



Educational Sign\* to guide  
children when washing  
and drying their hands

\* Included in the Kids Pack

# HAND DRYERS

## STELL'AIR PULSED AIR

ECO  
CONCEPTION



MADE  
IN FRANCE



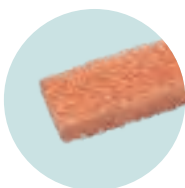
REF 8 11 963  
Stell'air Automatic  
Aluminium Metal Grey



REF 8 11 962  
Stell'air Automatic  
White

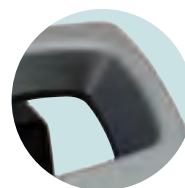
+ REF 5 90 2014

Bactericidal  
Copper Filter



+ REF 5 30 1719

Drainage Kit



### HYGIENIC

INTEGRATED BACTERICIDAL COPPER FILTER  
AND WATER TANK, ANTIBACTERIAL SURFACE  
TREATMENT

### ERGONOMIC

LARGE OPENING AND  
ILLUMINATED DRYING  
ZONE

### ANTI-VANDALISM

ULTRA-STURDY ABS

### PRODUCT ADVANTAGES



**35%**

more economical  
than competitors'  
models



**73 dB**

makes it the  
quietest on the  
market



**100%**

ergonomic with its  
wide opening and  
illumination

### CHARACTERISTICS

- Drying time: 10-15 seconds
- Usage: high
- Noise level: 73 dB
- Anti-vandalism: IK10 ABS cover
- Illuminated drying zone
- Bactericidal copper filter included
- Water recovery tray with a capacity of 1 L
- Rated power: 800 W
- Power supply: 220-240 V - 50 Hz
- CE - Class II - IP44
- 2 finishes: White or Metal Grey
- 3 year warranty
- Dim.: 340 (L) x 531 (H) x 220 (D) mm



Scan me to play  
the video

# HAND DRYERS

## ALPHADRY PULSED AIR



REF 8 11 906  
Alphadry Automatic  
Metal Grey



REF 8 11 905  
Alphadry Automatic  
White

+ REF 5 10 2010  
Alphadry HEPA Filter



### PRODUCT ADVANTAGES

- Suitable for intensive usage
- Activatable heating element
- Water recovery tray

### CHARACTERISTICS

- Drying time: 10-15 seconds
- Usage: intensive (brushless motor)
- Noise level: 80 dB
- Anti-vandalism: IK10 ABS
- HEPA air filter included
- 800 ml water recovery tray
- Rated power: 2050 W (1050 W without heating element)
- Power supply: 220-240 V - 50 Hz
- CE - Class I - IP21
- 2 finishes: White or Metal Grey
- **3 year warranty**
- Dim.: 300 (L) x 685 (H) x 220 (D) mm

## AIRWAVE PULSED AIR



REF 8 11 684  
Airwave Automatic  
Metal Grey



REF 8 11 707  
Airwave Automatic  
White

### PRODUCT ADVANTAGES

- Ultra-fast drying
- Automatically activatable heating element
- Water recovery tray

### CHARACTERISTICS

- Drying time: 15-20 seconds
- Usage: high
- Hot air: automatically activatable heating element
- Noise level: 77 dB
- Anti-vandalism: IK10 ABS
- Air filter included
- 600 ml water recovery tray
- Rated power: 1400 W (600 W without heating element)
- Power supply: 220-240 V - 50 Hz
- CE - Class II - IP24
- 2 finishes: White or Metal Grey
- **2 year warranty**
- Dim.: 250 (L) x 470 (H) x 160 (D) mm

## HURRICANE PULSED AIR



REF 8 11 614  
Hurricane Automatic  
White

### PRODUCT ADVANTAGES

- Ultra-fast drying
- Heating element
- Steel cover

### CHARACTERISTICS

- Drying time: 10-15 seconds
- Usage: high
- Hot air: heating element
- Noise level: 80 dB
- Anti-vandalism: steel cover
- Illuminated drying zone
- Rated power: 1600 W (1340 W without heating element)
- Power supply: 220-240 V - 50 Hz
- CE - Class I - IP21
- Finish: White
- **2 year warranty**
- Dim. (white): 205 (L) x 287 (H) x 180 (D) mm

# HAND DRYERS

## TORNADO HOT AIR



### PRODUCT ADVANTAGES

- Hot air
- Suitable for intensive usage
- Quiet (70 dB)
- Can easily replace an existing hand dryer

### CHARACTERISTICS

- Drying time: 20-30 seconds
- Usage: intensive (induction motor)
- Noise level: 70 dB
- Anti-vandalism: IK10 ABS
- Rated power: 2600 W
- Power supply: 220-240 V - 50 Hz
- CE - Class II - IP23
- 3 finishes: White, Composite White or Chrome
- 3 year warranty
- Dim.: 265 (L) x 302 (H) x 149 (D) mm



REF 8 11 292  
Tornado Automatic  
Chrome



REF 8 11 251 / 8 11 252  
Tornado Automatic ABS  
or Composite White



**ILLUMINATION**  
OF THE DRYING ZONE

## MASTER HOT AIR



### PRODUCT ADVANTAGES

- Hot air
- Suitable for intensive usage
- Quiet (70 dB)
- Anti-vandalism (aluminium cover)
- Can easily replace an existing hand dryer

### CHARACTERISTICS

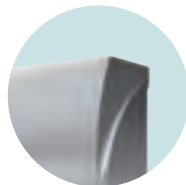
- Drying time: 20-30 seconds
- Usage: intensive (induction motor)
- Noise level: 70 dB
- Anti-vandalism: aluminium
- Rated power: 2600 W
- Power supply: 220-240 V - 50 Hz
- CE - Class II - IP23
- 2 finishes: Brushed Chrome or White
- 3 year warranty
- Dim.: 265 (L) x 265 (H) x 130 (D) mm



REF 8 11 414  
Master Automatic  
Brushed Chrome



REF 8 11 413  
Master Automatic Epoxy  
White



**ANTI-VANDALISM**  
ALUMINIUM COVER



**ILLUMINATION**  
OF THE DRYING ZONE

## OURAGAN HOT AIR

### PRODUCT ADVANTAGES

- Hot air
- Nozzle pivots 360°
- Anti-vandalism (steel cover)
- Can easily replace an existing hand dryer

### CHARACTERISTICS

- Drying time: 20-30 seconds
- Usage: average
- Noise level: 78 dB
- Anti-vandalism: pressed steel
- Rated power: 2600 W
- Power supply: 220-240 V - 50 Hz
- CE - Class I - IP21
- 3 finishes: Manual White, White or Chrome
- 2 year warranty
- Dim.: 265 (L) x 240 (H) x 200 (D) mm



REF 8 11 378  
Ouragan Automatic  
Chrome



REF 8 11 341  
Ouragan Automatic White

REF 8 11 342  
Ouragan Manual White



**ANTI-VANDALISM**  
STEEL COVER

# HAND DRYERS

## ZEPHYR HOT AIR

MADE IN FRANCE



### A WORD FROM THE DESIGNER

"A colourful finish is now essential, classic and highly valued. This new range personalizes and enhances any place where it is installed. It's truly the finishing touch! Rarely discreet, the use of light and sheen serves to underscore the careful design of the products."

Jean-Guy de Russé

#### PRODUCT ADVANTAGES

- Personalizable with our clients' names
- Cost-effective
- Anti-vandalism
- 6 Colour choices

#### CHARACTERISTICS

- Drying time: 20-30 seconds
- Usage: average
- Noise level: 69 dB
- Illuminated drying zone
- Rated power: 2100 W
- Anti-vandalism: IK10 ABS cover
- Power supply: 220-240 V - 50 Hz
- CE - Class II - IP23
- 3 year warranty
- Dim.: 214 (L) x 243 (H) x 194 (D) mm



REF 8 11 1403  
Zephyr Automatic  
Red



REF 8 11 1400  
Zephyr Automatic  
Black



REF 8 11 1462  
Zephyr Automatic  
Neon Green



REF 8 11 1401  
Zephyr Automatic  
White



REF 8 11 1404  
Zephyr Automatic  
Light Blue



REF 8 11 1402  
Zephyr Automatic  
Blue

# HAND DRYERS

## **INTEGRATED SOLUTIONS**

For more than 30 years now, we have been imagining and building built-in solutions to meet complex technical constraints. Backed by our expertise in hand dryers, particularly for railway applications, we can scale any form of solution for our clients around blown air: drying for industrial parts, space heaters, use in severe, restricted or confined environments, and so on. Our mastery of simulations of systems' air flow behaviours allows us to very quickly reach perfectly effective, personalized solutions.

Olivier de Barbeyrac  
Technical Manager



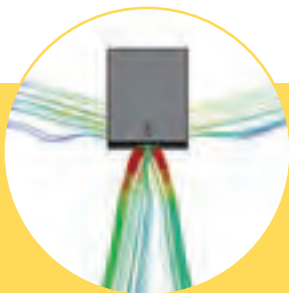
### **EXPERTISE**

Having dealt with the most varied constraints over more than 30 years, we put our know-how at your disposal to provide you with fast responses and effective solutions.



### **DESIGN & ERGONOMICS**

Between design, efficiency and footprint limitations, you undoubtedly have multiple expectations. We can take all those demands into account to devise a completely personalized solution for you.



Fluid mechanics

### **PUSHING THE LIMITS OF INNOVATION**

- Space constraints
- Aesthetic constraints
- Normative constraints
- Acoustical constraints
- Meteorological constraints
- User behavioural constraints



### **BESPOKE DEVELOPMENT & PRODUCTION**

Our R&D Department designs and develops each bespoke built-in system for some of the most complex and difficult environments: railway, industry, communities, high altitude, etc. Based at the same site in Nantes, our R&D and manufacturing teams work closely together to ensure flexibility and agility in the development and implementation of our clients' projects.

An aerial, high-angle photograph of a swimming pool. The water is dark, and the swimmers' heads and shoulders are visible above the surface, creating a pattern of light and dark spots. The water's surface is textured with ripples and reflections. A vertical teal-colored bar is positioned on the right side of the image.

# ***HAIR DRYERS*** **FOR POOLS & GROUPS**

# COMMUNAL HAIR DRYERS

Whether installed at a swimming pool, a gym or a spa, our hair dryers will adapt to any environment.

## GUARANTEED QUIET

At just 70 dB, the Neptune hair dryer is fitted with an extremely efficient, smart motor. It is so quiet that its presence may even be forgotten, wherever you install it.



## ERGONOMIC USE

When they are optimized to adapt to all ages thanks to their adjustable height and 180° rotation, hair dryers become much easier to use.

## Rethink your users' comfort by offering them the only communal hair dryer that moves for you!

“ The Neptune guarantees the "wow" factor amongst our users! The adjustable height and above all the 180° rotation make for a highly innovative concept. Aesthetically pleasing and much quieter than the competitors, it is also very convenient for cleaning. With nearly 300,000 visitors annually, we needed equipment which would be fast and easy to install and maintain. The on/off switch is a real plus, because it allows us to isolate the hair dryers, one by one. Pleasant to use and easy to maintain: we've received nothing but positive feedback. ”

Serge Lucas  
Water Complex Director  
Town of Cesson-Sévigné



## ROBUSTNESS

Corrosion resistant in chlorinated atmospheres, fitted with an IK10 ABS cover and an induction motor to handle intensive use: choosing Neptune also means opting for performance.



### DID YOU KNOW?

The choice of name for our new hair dryer was no matter of chance. *Favet Neptunus Eunti* is the motto of the city of Nantes. The Latin phrase means "Neptune favours those who dare" or "May Neptune favour the traveller". Created by our own Engineering Department, our hair dryers are made in France, in Nantes!

# COMMUNAL HAIR DRYERS

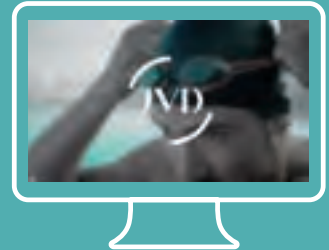
## NEPTUNE

MADE IN FRANCE



**LET'S MOVE!**

**DISCOVER NEPTUNE IN VIDEO**



### PRODUCT ADVANTAGES

- Adjustable height
- 180° rotation
- Quiet (70 dB)
- Longevity (induction motor)
- Corrosion resistant in chlorinated atmospheres
- On/off button to simplify maintenance

### CHARACTERISTICS

- Usage: intensive (induction motor)
- Noise level: 70 dB
- Anti-vandalism: IK10 ABS cover
- Rated power: 2000 W
- Power supply: 220-240 V - 50 Hz
- CE - Class II - IP23
- 3 year warranty
- Dim. (support): 138 (L) x 1153 (H) x 148 (D) mm
- Dim. (hair dryer) 150 (L) x 348 (H) x 384 (D) mm



REF 8 22 1405  
Neptune Hair Dryer White



REF 8 22 1406  
Neptune Hair Dryer Blue



REF 8 22 1407  
Neptune Hair Dryer Red

## DRAGON

MADE IN FRANCE



REF 8 22 009  
Dragon

### PRODUCT ADVANTAGES

- Quiet (70 dB)
- Longevity (induction motor)
- Corrosion resistant in chlorinated atmospheres

### CHARACTERISTICS

- Usage: high
- Noise level: 70 dB
- Anti-vandalism: IK10 ABS cover
- Dust filter
- Rated power: 2100 W
- Power supply: 220-240 V - 50 Hz
- CE - Class II - IP23
- 3 year warranty
- Dim.: 255 (L) x 280 (H) x 140 (D) mm

# *PAPER* **DISPENSERS**



# PAPER DISPENSERS

With their optimized design and ergonomics, our paper dispensers are conceived and developed to be easy to use and to maintain.



## DISPOSABLE PAPER

Disposable paper rolls without cores are compatible with centre pull devices.



Disposable paper rolls with cores are compatible with auto cut devices. They come in the form of spools of different diameters and different lengths. Please note that some spools are only compatible with proprietary solutions.



## PAPER TOWEL FORMATS

Disposable folded paper is compatible with zig-zag devices. They are classified according to how the sheets are folded:  
 Interleaved paper: W or Z  
 Zig zag paper: V  
 Folder paper: C



**NEW**

## JUMBO MOBILE SUPPORT

Perfectly suited to JVD products and easy to install, it allows users to place their mobile phones on top without risk.

REF 8 99 1625  
 Mobile Holder for Jumbo 400



Brushed 304 stainless steel.  
 Compatible with Cleanline Jumbo 200-400 and Yaliss Jumbo 400.  
 Dim.: 99 (L) x 190 (D) x 144 (H) mm

## 2 POSSIBLE SOLUTIONS

Two solutions coexist on the market today. For proprietary solutions, the equipment is usually free or sold at a reduced price. The equipment then only works with that brand's consumables which tend to be more expensive. Conversely, the open solutions from JVD's product range are invoiced in the beginning but allow you to use any brand of consumable (including brands which offer proprietary equipment).

# CLEANLINE RANGE PAPER DISPENSERS

## THE BENEFITS OF THE CLEANLINE RANGE



### MADE IN FRANCE

Our products are backed by JVD's 30 years of experience and are 100% designed and manufactured in France.



### SECURE LOCK

The Cleanline range is fitted with a removable key. A permanent key is also available (optional).



### EASY TO CHANGE OUT CONSUMABLES

The Cleanline range is compatible with most consumables on the market, their levels are always visible, and they are easy to access.



### PERSONALIZABLE

The Cleanline range is completely personalizable and can bear the client's brand name or logo.

## CLEANLINE JUMBO 200-400 DISPENSERS



REF 8 99 1380  
Cleanline Jumbo 200 Toilet Roll Dispenser Black Cover



REF 8 99 734  
Cleanline Jumbo 200 Toilet Roll Dispenser Metal Grey Cover



REF 8 99 602  
Cleanline Jumbo 200 Toilet Roll Dispenser White Cover

REF 8 99 1381  
Cleanline Jumbo 400 Toilet Roll Dispenser Black Cover

REF 8 99 735  
Cleanline Jumbo 400 Toilet Roll Dispenser Metal Grey Cover

REF 8 99 603  
Cleanline Jumbo 400 Toilet Roll Dispenser White Cover

REF 8 99 1625  
Mobile Holder for Jumbo 400

**NEW**

### PRODUCT ADVANTAGES

- Easy to tear right or left thanks to chiselled blades

### CHARACTERISTICS

- ABS cover - Grey ABS frame
- Capacity: 200 / 400 m roll
- Core: Ø 45 mm
- Paper level indicator
- 4 mounting points
- Dim. (200): 245 (L) x 275 (H) x 120 (D) mm
- Dim. (400): 285 (L) x 320 (H) x 120 (D) mm
- Optional:**
- Possibility of installing a fixed key only for the Cleanline White range (2 10 1697)
- Adjustable cores for the Jumbo 400: 60 mm (2 10 1439) or 50 mm (2 10 1412)

## CLEANLINE MAXI / MINI TP DISPENSERS



REF 8 99 607  
Cleanline Maxi Toilet Paper Dispenser White Cover



REF 8 99 608  
Cleanline Mini Toilet Paper Dispenser White Cover

### PRODUCT ADVANTAGES

- Level indicator

### CHARACTERISTICS

- White ABS cover - Grey ABS frame
- Capacity:  
Cleanline Mini toilet paper: 2 packets (8 99 608)  
Cleanline Maxi toilet paper: 4 packets (8 99 607)
- 4 mounting points
- Dim. (Mini): 137 (L) x 145 (H) x 122 (D) mm
- Dim. (Maxi): 145 (L) x 275 (H) x 135 (D) mm
- Optional:**
- Possibility of installing a fixed key (2 10 1697)

# CLEANLINE RANGE PAPER DISPENSERS

## CLEANLINE ZIG-ZAG DISPENSER

MADE  
IN FRANCE



REF 8 99 1382  
Cleanline Zig-zag  
Dispenser Black  
Cover

REF 8 99 733

Cleanline Zig-zag  
Dispenser Metal Grey  
Cover



REF 8 99 604

Cleanline Zig-zag  
Dispenser White Cover



### CHARACTERISTICS

- ABS cover - Grey ABS frame
- Capacity: 400-600 paper towels
- Max dimensions:  
Max width: 245 mm  
Depth: 110 mm
- Paper level indicator
- 4 mounting points
- Dim.: 265 (L) x 340 (H) x 110 (D) mm
- Optional:**  
- Possibility of installing a fixed key  
(2 10 1697)

## CLEANLINE MAXI CENTRE PULL DISPENSER

MADE  
IN FRANCE



REF 8 99 1383  
Cleanline Maxi Centre Pull  
Dispenser Black

REF 8 99 736

Cleanline Maxi Centre  
Pull Dispenser Metal  
Grey Cover



REF 8 99 605

Cleanline Maxi Centre  
Pull Dispenser White  
Cover



REF 8 99 737

Cleanline Maxi Centre  
Pull Dispenser  
Smoked Transparent  
Cover

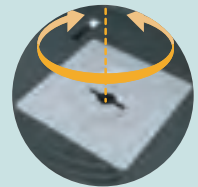


### PRODUCT ADVANTAGES

- Adjustable tightness to slow dispensing

### CHARACTERISTICS

- ABS cover - Grey ABS frame
- Capacity: 450 format (spool: Ø 205 mm)
- 4 mounting points
- Dim.: 220 (L) x 310 (H) x 220 (D) mm
- Optional:**  
- Possibility of installing a fixed key  
(2 10 1697)



**ECONOMICAL  
ADJUSTABLE TIGHTNESS**

## CLÉ FIXE

REF 2 10 1697  
Cleanline Fixed Key



### OPTIONAL

- Exclusive for the Cleanline range
- Permanent key to affix to the device
- Prevents the problem of lost keys

## CLEANTECH AUTOMATIC PAPER DISPENSER



REF 8 99 845  
Cleantech White

### PRODUCT ADVANTAGES

- Optimized hygiene: no contact with the device
- Easy tear paper
- Antistatic roll to prevent jams

### CHARACTERISTICS

- White ABS cover - Grey ABS frame
- Capacity:  
Maximum diameter: 216 mm  
Maximum width: 210 mm
- Adjustable core diameter:  
38-51 mm
- Weight: 3 kg
- Dim.: 309 (L) x 398 (H) x 252 (D) mm

## CLEANLINE MINI CENTRE PULL DISPENSER

MADE  
IN FRANCE



REF 8 99 606  
Cleanline Mini Centre Pull  
Dispenser White Cover

### CHARACTERISTICS

- White ABS cover - Grey ABS frame
- Capacity: 200 format (spool: Ø 130 mm)
- 4 mounting points
- Dim.: 145 (L) x 275 (H) x 135 (D) mm
- Optional:**  
- Possibility of installing a fixed key  
(2 10 1697)

# YALISS RANGE PAPER DISPENSERS

## THE BENEFITS OF THE YALISS RANGE



### MADE IN FRANCE

Our products are backed by JVD's 30 years of experience and are 100% designed and manufactured in France.



### EASY TO WORK WITH

The Yaliss range was specially designed to be easy to install and maintain.



### SUITABLE FOR LARGE FORMATS

Our products were designed to adapt to any size of paper, including large formats.



### PERSONALIZABLE

The Yaliss range is completely personalizable and can bear the client's brand name, logo or even colours.

## YALISS JUMBO 400 DISPENSER

MADE IN FRANCE 

### PRODUCT ADVANTAGES

- Anti-vandalism: impact resistant PC
- ABS cover (IK10)
- Secure lock with key
- Practical: easy to change out consumables
- Easy to tear right or left thanks to chiselled blades

### CHARACTERISTICS

- Material:  
8 99 955: ABS  
8 99 1288: PC-ABS
- Capacity: 1 roll: 400 m - Ø 295 mm max
- Universal core
- Paper level indicator
- 4 mounting points
- Dim.: 310 (L) x 334 (H) x 123 (D) mm



REF 8 99 955  
Yaliss Jumbo 400  
Dispenser White

+ REF 8 99 1288  
Yaliss Jumbo 400  
Dispenser IK10 White

**NEW**

+ REF 8 99 1625  
Mobile Holder for  
Jumbo 400



**ERGONOMIC**  
EASY TO TEAR RIGHT OR  
LEFT THANKS TO CHISELLED  
BLADES



**UNIVERSAL**  
UNIVERSAL CORE



**ANTI-VANDALISM**  
IK10 IMPACT RESISTANT PC-ABS  
COVER (REF. 8 99 1288)

# YALISS RANGE PAPER DISPENSERS

## YALISS MINI MIXED TP DISPENSER

MADE IN FRANCE



REF 8 99 954  
Yaliss Mini Mixed  
Toilet Paper  
Dispenser



**UNIVERSAL**  
REMOVABLE CORE  
FOR ROLL OR SHEET BY  
SHEET FORMAT

### PRODUCT ADVANTAGES

- Suitable for large formats
- Removable core
- Secure lock with key
- Practical: easy to change out consumables

### CHARACTERISTICS

- ABS cover - Grey ABS frame
- Capacity: 1 roll - Ø 130 mm max  
2 packets, 150 mm high
- Paper level indicator
- 3 mounting points
- Dim.: 155 (L) x 177 (H) x 135 (D) mm

## YALISS ZIG-ZAG DISPENSER

MADE IN FRANCE



REF 8 99 880  
Yaliss Zig-zag  
Dispenser White

### PRODUCT ADVANTAGES

- Suitable for large paper towel formats
- Secure lock with key
- Practical: easy to change out consumables

### CHARACTERISTICS

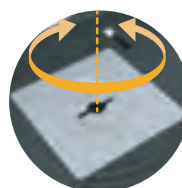
- White ABS cover - Grey ABS frame
- Capacity: 400-700 sheets
- Max dimensions:
- Max width: 255 mm - Depth: 125 mm
- Paper level indicator
- 4 mounting points
- Dim.: 280 (L) x 350 (H) x 133 (D) mm

## YALISS MAXI CENTRE PULL DISPENSER

MADE IN FRANCE



REF 8 99 956  
Yaliss Maxi Centre Pull  
Dispenser White



**ECONOMICAL**  
ADJUSTABLE TIGHTNESS

### PRODUCT ADVANTAGES

- Adjustable tightness to slow dispensing
- Suitable for spools with large diameters
- Secure lock with key
- Practical: easy to change out consumables

### CHARACTERISTICS

- ABS cover - Grey ABS frame
- Capacity: 450 format (spool: Ø 230 mm)
- Paper level indicator
- 4 mounting points
- Dim.: 260 (L) x 305 (H) x 240 (D) mm

# METAL RANGE PAPER DISPENSERS

## THE BENEFITS OF THE METAL RANGE



### ANTI-VANDALISM

Steel anti-vandalism cover and frame.



### EASY TO WORK WITH

Easy to refill, clean and maintain.



### SECURE

Secure lock with key.



### PRACTICAL

Consumables level indicator.

## ESSUIE-MAINS METAL



REF 8 99 617  
Metal Paper  
Towel Dispenser  
White



REF 8 99 797  
Paper Towel  
Dispenser  
Brushed  
Stainless Steel

### CHARACTERISTICS

- Capacity: 400-700 paper towels
- Max dimensions:  
Max width: 245 mm  
Depth: 120 mm
- Consumables level indicator at the front
- 4 mounting points
- 2 finishes: White Epoxy or Brushed Stainless Steel
- Dim.: 240 (L) x 400 (H) x 123 (D) mm

## PH MIXTE METAL



REF 8 99 621  
Metal Mixed Toilet Paper  
Dispenser  
White



REF 8 99 622  
Mixed Toilet Paper  
Dispenser  
Brushed Stainless Steel

### CHARACTERISTICS

- Secure lock with key
- Capacity: 1 roll or 2 packets of folded paper
- 3 mounting points
- 2 finishes: White Epoxy or Brushed Stainless Steel
- Dim.: 134 (L) x 137 (H) x 120 (D) mm

## JUMBO METAL



REF 8 99 439  
Metal Jumbo 200  
Dispenser White

REF 8 99 440  
Metal Jumbo 400  
Dispenser White



REF 8 99 1110  
Metal Jumbo 200  
Dispenser Brushed  
Stainless Steel

REF 8 99 623  
Metal Jumbo 400  
Dispenser Brushed  
Stainless Steel

### PRODUCT ADVANTAGES

- Metal core delivered with adapter

### CHARACTERISTICS

- Consumables level indicator at the front
- Capacity: 200 / 400 m spool
- Core: Ø 45 / 60 mm
- Easy to tear right or left
- 4 mounting points
- 2 finishes: White Epoxy or Brushed Stainless Steel
- Dim. (200): 246 (L) x 282 (H) x 120 (D) mm
- Dim. (400): 290 (L) x 326.5 (H) x 120 (D) mm

## DISTRIBUTEURS SPOOL



REF 8 99 1169  
Spool Support on  
Stand

REF 8 99 1238  
Wall-mounted  
Spool Support



### PRODUCT ADVANTAGES

- Easy to tear paper: plastic saw built into the cover and held in place by pressure from 2 side springs

### CHARACTERISTICS

- Tubular metal structure (Ø 20 mm): White Epoxy finish
- Green ABS cover
- Capacity: 1 spool of industrial paper
- Dim. (on stand): 530 (L) x 910 (H) x 405 (D) mm
- Dim. (wall-mounted): 360 (L) x 360 (H) x 405 (D) mm

A black and white photograph of two men in white lab coats standing at a sink. They are both focused on washing their hands. The man in the foreground is on the left, and the man in the background is on the right. Water is running from the faucet into the sink. The background is blurred, suggesting a clinical or laboratory setting.

# ***SOAP*** **DISPENSERS**

# SOAP DISPENSERS

## ***AUTOMATIC SOAP DISPENSERS***

Automatic soap dispensers are becoming increasingly common in washrooms. They are more hygienic as no contact with the device is required. They can also be more economical by limiting the flow.

## ***SOAP IN BULK OR A CARTRIDGE***

Two solutions coexist on the professional soap dispenser market. Proprietary soap dispensers with cartridges need to be replaced whenever the cartridge is empty. Solutions with an integrated container make it possible to use bulk soap (from a container). This solution is more economical and more ecological (less packaging).

## ***GEL OR FOAMING SOAP***

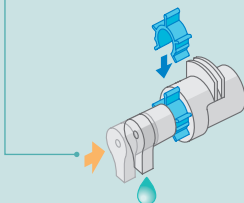
Soap is available in two forms. Gel soap is the most common one on the market. Soap also comes in a foaming version. With a suitable dispenser, this solution can cut soap consumption by four and water consumption by 50%.



## ***THE PUMP: A KEY COMPONENT OF THE DISPENSER***

Inside the dispenser, the pump is the part which manages the delivery of the soap. A pump's performance can be measured based on two criteria: its capacity to limit the flow and its longevity.

**ECONOMICAL**  
THE FLOW REDUCER CAN CUT THE CONSUMPTION OF GEL SOAP IN HALF



## ***ECOLABEL IS A EUROPEAN ECOLOGICAL LABEL***

Based on the principle of a "global approach" which "considers the product's life cycle from the extraction of raw materials to manufacturing, distribution and use, all the way to its recycling or disposal after use". Quality and uses are also taken into account.



**1/4**

A foaming soap dispenser can cut consumption by up to 4 times



# CLEANLINE RANGE SOAP DISPENSERS

## CLEANLINE GEL or FOAM DISPENSERS

ECO CONCEPTION MADE IN FRANCE



REF 8 44 1378  
Cleanline Foaming  
Soap Dispenser  
Matte Black Cover

REF 8 44 1379  
Cleanline Gel Soap  
Dispenser Matte  
Black Cover



REF 8 44 732  
Cleanline Foaming  
Soap Dispenser  
Metal Grey Cover

REF 8 44 731  
Cleanline Gel  
Soap Dispenser  
Metal Grey Cover



REF 8 44 478  
Cleanline Foaming  
Soap Dispenser  
White Cover

REF 8 44 479  
Cleanline Gel  
Soap Dispenser  
White Cover

REF 8 44 1455  
Cleanline Hydroalcoholic Gel  
Soap Dispenser White Cover

### PRODUCT ADVANTAGES

- Very sturdy
- Easy to refill consumables
- Choice of 3 colours
- 3 versions: gel, foam or hydroalcoholic gel

### CHARACTERISTICS

- Capacity: 700 ml
  - Compatible with hydroalcoholic gel
  - Removable container for easier cleaning
  - Material: ABS
  - Flow: 1 ml or 0.5 ml per pump (gel)
  - Level indicator
  - Locks with a key
  - Meets HACCP requirements
  - 1 year warranty
  - Dim.: 110 (L) x 206 (H) x 106 (D) mm
- Optional:**
- Possibility of installing a fixed key (2 10 1697)



**HYGIENIC**  
THE VERSION WITH  
A PADDLE PREVENTS  
CONTACT WITH THE  
HANDS (REF. 8 44 972)



**FOAM**  
FOAMING SOAP CAN  
CUT CONSUMPTION  
BY UP TO 4 TIMES



**PRACTICAL**  
EASY TO REFILL  
AND CLEAN THANKS  
TO ITS REMOVABLE  
CONTAINER

## CLEANLINE KIDS

NEW

MADE IN FRANCE



REF 8 44 478KIDS  
Cleanline Foaming  
Soap Dispenser Kids

REF 8 44 479KIDS  
Cleanline Gel Soap  
Dispenser Kids

### PRODUCT ADVANTAGES

- The soap dispensing solution from the Kids range
- Very sturdy
- Easy to refill consumables
- 2 versions: gel or foam

### CHARACTERISTICS

- Capacity: 700 ml
- Removable container for easier cleaning
- Material: ABS
- Flow: 1 ml or 0.5 ml per pump (gel)
- Locks with a key
- Meets HACCP requirements
- 1 year warranty
- Dim.: 110 (L) x 206 (H) x 106 (D) mm

# YALISS RANGE SOAP DISPENSERS

## YALISS SAVON AUTO GEL / FOAM DISPENSERS

DESIGNED  
IN FRANCE 



REF 8 44 1449  
Yaliss Foaming  
Soap Dispenser  
White Cover

REF 8 44 1448  
Yaliss Gel Soap Dispenser  
White Cover



**HYGIENIC**  
AUTOMATIC HAND  
DETECTION



**EASY**  
AUTOMATICALLY SHUTS  
OFF WHEN THE COVER  
IS OPENED AND A WIDE  
OPENING FOR EASY REFILLS



**FOAM OR GEL**  
THANKS TO  
INTERCHANGEABLE PUMPS

### PRODUCT ADVANTAGES

- Hygienic: automatic hand detection
- Suitable for medical and agrifood settings
- Easy to refill consumables
- 2 versions: gel or foam

### CHARACTERISTICS

- Capacity: 1000 ml
- Automatically shuts off when the cover is opened
- Removable container for easier cleaning
- Large opening for level indicator
- Flow: 1 ml per dose (gel)
- Material: ABS
- Power supply: 4 LR14 (C, 1.5V) batteries (not included)
- Level indicator
- Locks with a key
- Meets HACCP requirements
- 2 year warranty
- Dim.: 158 (L) x 296 (H) x 106 (D) mm

## FOAMING SOAP



REF 8 88 648  
Foaming Soap 5 L  
Container



REF 8 88 1657  
Foaming Soap Lemon  
5 L Container

### PRODUCT ADVANTAGES

- Eco-friendly
- Economical
- Gentle on the hands

### CHARACTERISTICS

- 8 88 648:**
- Made in the European Union: RS 37106/Z
  - pH: 6.0-6.5
  - Biodegradable and Ecolabel
  - Compliant with standards 73/404/EEC and 73/405/EEC

- 8 88 1657:**
- Made in France
  - 98.8% ingredients of natural origin
  - Ecocert
  - Compliant with standards 1223/2009 (EC) and ISO 11930

# SOAP DISPENSERS

## SAPHIR



REF **8 44 397**  
Saphir Soap Dispenser  
White Cover



**PRACTICAL**  
EASY TO REFILL

### PRODUCT ADVANTAGES

- Automatic hand detection
- Large capacity (1,100 ml)
- Eco-friendly (flow limited to 1 ml every 3 seconds)

### CHARACTERISTICS

- Automatically shuts off when the cover is opened
- Automatic hand detection
- Translucent level indicator
- Flow: 1 ml per dose
- Delivers up to 1 dose every 3 seconds
- Power supply: 4 LR6 (AA, 1.5V) batteries (not included)
- Locks with a key
- Meets HACCP requirements
- **1 year warranty**
- Subject to eco-recycling
- Dim.: 140 (L) x 235 (H) x 107 (D) mm

## SAVINOX



REF **8 44 254**  
Savinox 850 ml  
Shiny Stainless  
Steel



REF **8 44 304**  
Savinox 850  
ml Brushed  
Stainless Steel



REF **8 44 253**  
Savinox 450 ml  
Shiny Stainless  
Steel

### PRODUCT ADVANTAGES

- Anti-vandalism
- Corrosion resistant 304 stainless steel
- Soap level indicator

### CHARACTERISTICS

- Capacity: 450 / 850 ml
- 2 finishes:  
Shiny 304 Stainless Steel (8 44 254 / 8 44 253)  
Brushed 304 Stainless Steel (8 44 304)
- Reinforced mounting system
- Cover locks with a key
- Translucent level indicator
- Meets HACCP requirements
- **1 year warranty**
- Dim. (450 ml): 90 (L) x 169 (H) x 115 (D) mm
- Dim. (850 ml): 105 (L) x 182 (H) x 115 (D) mm

## ISSISS



REF **8 44 772**  
Ississ Soap Dispenser  
Translucent



REF **8 44 773**  
Ississ Soap Dispenser  
White

### PRODUCT ADVANTAGES

- Ecological & economical: reusable container
- Easy to refill
- Locks with a key (included)

### CHARACTERISTICS

- Key locking system for container
- Capacity: 300 ml
- Material: ABS
- Flow: 1 ml per pump
- White or translucent finish
- Transparent container
- Meets HACCP requirements
- **1 year warranty**
- Dim.: 75 (L) x 202 (H) x 58 (D) mm

# SOAP DISPENSERS

## RUBIS



REF 8 44 738  
Rubis Soap Dispenser

### PRODUCT ADVANTAGES

- Long-lasting pump (silicone)
- Personalizable name
- Locks with a key (included)

### CHARACTERISTICS

- Compatible with hydroalcoholic gel
- Capacity: 800 ml
- Material: ABS
- Flow: 1 ml per pump
- Locks with a key
- Meets HACCP requirements
- **1 year warranty**
- Dim.: 105 (L) x 207 (H) x 87 (D) mm

## CRYSTAL



REF 8 44 102  
Crystal Soap  
Dispenser 1000 ml  
Push Button



REF 8 44 098  
Crystal Soap  
Dispenser 450 ml  
Push Button

REF 8 44 103  
Crystal Soap  
Dispenser 1000 ml  
Paddle

REF 8 44 099  
Crystal Soap  
Dispenser 450 ml  
Paddle



**HYGIENIC**  
SUITABLE FOR  
AGRI-FOOD SETTINGS

### PRODUCT ADVANTAGES

- Long-lasting pump (silicone)
- 2 capacities: 450 or 1000 ml
- Push button or paddle

### CHARACTERISTICS

- Compatible with hydroalcoholic gel
- Material: ABS
- Flow: 1 ml per pump
- Meets HACCP requirements
- **1 year warranty**
- Dim. (450 ml): 110 (L) x 155 (H) x 99 (D) mm
- Dim. (1000 ml): 110 (L) x 245 (H) x 99 (D) mm

## CLEANEAT TOILET SEAT DISINFECTANT



REF 8 44 131  
Cleanseat Disinfectant  
Dispenser 450 ml Push  
Button



+ REF 8 88 1656  
Cleanseat Refill  
(1 L bottle)



**PRACTICAL**  
UNDERSTANDABLE  
INSTRUCTIONS FOR  
USE PRINTED ON THE  
PRODUCT

### PRODUCT ADVANTAGES

- Long-lasting pump (silicone)
- Used under category TP2
- Compliant with European standard EN 13697

### CHARACTERISTICS

- Capacity: 450 ml (approx. 450 doses)
- Material: ABS
- Flow: 1 ml per pump
- Meets HACCP requirements
- **1 year warranty**
- Dim.: 110 (L) x 155 (H) x 99 (D) mm

# *AIR* FRESHENERS






# YALISS RANGE AIR FRESHENERS

## YALISS FRAGRANCE

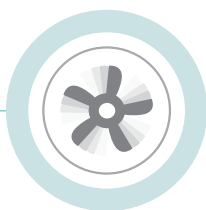


### PRODUCT ADVANTAGES

-  4 programme modes: day/night or continuous, 2 ventilation speeds (normal or fast)
-  1-2 months of constant, lasting diffusion
-  Eco-friendly, reduced packaging, 100% recyclable material, gas free



REF 8 33 959  
Yaliss Air  
Freshener



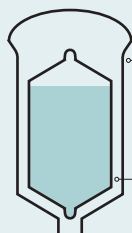
**FAN**  
INTEGRATED SO THE  
FRESHENER CAN BE  
POSITIONED ANYWHERE  
IN THE ROOM

### CHARACTERISTICS

- Air freshener:
- Material: polypropylene
  - Continuous or day/night mode
  - 2 speeds: normal or fast
  - Power supply: 2 LR20 (D) batteries (not included)
  - Locks with a key (included)
  - 2 year warranty
  - Dim.: 90 (L) x 200 (H) x 75 (D) mm

- Refills:
- Compliant with IFRA standards
  - Designed and manufactured in France

## YALISS FRAGRANCE REFILL



An impermeable wall for optimal conservation. Simply press to release the fragrance.

A microporous wall allowing for the gradual, continuous diffusion of fragrance.



**PATENTED INNOVATION**  
PATENTED DOUBLE WALL CARTRIDGE



**Vent  
d'Atlantide**

REF 8 88 1393

**Feuille  
de figuier**

REF 8 88 1391



# 4 fragrances

CREATED AND MADE IN GRASSE  
(FRANCE) BY A CRAFT PERFUMER



**Escale  
à Bali**

REF 8 88 1392

**Cologne  
verveine**

REF 8 88 1394



# AIR FRESHENERS

## AMARILLYS AIR FRESHENER



REF 8 33 522  
Amarillys Air  
Freshener



**ECONOMICAL**  
WITH ITS DAY/NIGHT MODE

### PRODUCT ADVANTAGES

- Economical (day/night mode, adjustable frequency)
- On/off indicator lights

### CHARACTERISTICS

- 3 operating modes:  
Day (works in the light)  
Night (works in the dark)  
24/7
- Programmable frequency of sprays:  
7.5, 15 or 30 min
- Power supply: 2 LR14 (C, 1.5V) batteries (not included)
- Battery life: 30,000 sprays
- On/off indicator light
- Spray indicator light
- 2 year warranty
- Dim.: 95 (L) x 230 (H) x 95 (D) mm

## AMARILLYS REFILLS

MADE IN FRANCE



REF 8 88 1232  
Neutralizing  
Floral Spray



REF 8 88 1464  
Purifying  
Essential Oil Spray



REF 8 88 1236  
Deodorant  
Peach Spray



REF 8 88 1465  
Fresh Wind  
Spray



REF 8 88 1235  
Deodorant  
Berry Spray



REF 8 88 1237  
Deodorant  
Citrus Spray

### PRODUCT ADVANTAGES

- Fragrances designed and manufactured in France
- IFRA compliant

### CHARACTERISTICS

- Net volume: 250 ml for 3,000 sprays
- Dim.: 65 mm (Ø) x 130 mm (H)

## ELIMINODOR

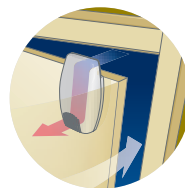
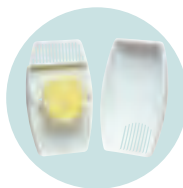
ECO CONCEPTION MADE IN FRANCE



REF 8 33 053  
Eliminodor Odour  
Inhibitor

+ REF 8 88 057  
Eliminodor Refill  
Lemon

REF 8 88 058  
Eliminodor Refill  
Chlorophyll



### SIMPLE AND EFFECTIVE

ELIMINODOR WORKS ONLY VIA THE FLOW OF AIR CAUSED BY MOVING THE DOOR TO WHICH IT IS ATTACHED.

### PRODUCT ADVANTAGES

- No motor, no gas, no electricity
- Diffuses the fragrance via the air flow generated by the door's movements
- Uses no energy

### CHARACTERISTICS

- Material: polypropylene
- Dim.: 100 (L) x 155 (H) x 50 (D) mm



# ***ACCESSORIES***

# CHANGING TABLES

## GALET WALL-MOUNTED CHANGING TABLE



REF **8 99 1386**  
Galet Changing Table  
Vertical Foldaway



REF **8 99 1385**  
Galet Changing Table  
Horizontal Foldaway



+ REF **2 90 2175**  
Galet Changing Table  
Strap

**EASY**  
WASHABLE, REPLACEABLE  
STRAP

### PRODUCT ADVANTAGES

- Compliant with EN 12221
- Design specially created for the comfort of the child
- Opens slowly
- Incomparable hygiene (no stagnant residue)
- Antibacterial treatment

### CHARACTERISTICS

- Mounting kit included
- Table comes with strap
- Made of high-density polypropylene with the antibacterial SteriTouch®
- Net weight: 9 Kg
- Dim. (vertical): 490 (L) x 780 (H) x 823 (D) mm
- Dim. (horizontal): 760 (L) x 600 (H) x 647 (D) mm

## BABY CHANGING STATION



REF **8 99 1548**  
Changing Support Grey  
+ Guardrail Grey



Guardrail Grey

COMES IN:



→ Please contact us  
for other colours

COMES IN:



→ Please contact us  
for other colours

### PRODUCT ADVANTAGES

- Material specially designed for the comfort of the child
- Antibacterial treatment
- Choice of 5 colours

### CHARACTERISTICS

- Solid polyurethane / latex polymer moulded mattress with UV stabilizer and SteriTouch® antibacterial
- 100% watertight "superskin"
- Fixed mount on an aluminium rail (included) built into the worktop
- Guardrail (optional)
- Dim.: 850 (L) x 575 (H) mm

## DRAW SHEET DISPENSER



REF **8 99 1388**  
Draw Sheet Dispenser

+ REF **8 88 1389**  
Draw Sheet Roll 50 m

### PRODUCT ADVANTAGES

- Comfort (fabric feel)
- Hygienic (water resistant)

### CHARACTERISTICS

- Roll of draw sheets: paper combination of white silk and polyethylene sheets. Comes in a 50 m roll, producing about 130 draw sheets.

# WASHROOM & BATHROOM ACCESSORIES

## SUPPORT BARS

REF 8 99 1436  
Angled Support Bar



REF 8 99 1437  
Straight Support Bar



REF 8 99 1446  
Straight Support Bar



### CHARACTERISTICS

- Material: stainless steel
- Dim. (angled bar): 420 (L) x 265 (H) x 119 (D) mm
- Dim. (straight bar): Length: 400 or 500 mm

## TOWEL RAILS

REF 8 99 1440  
Single Towel Rail



REF 8 99 1441  
Double Towel Rail



REF 8 99 1442  
Towel Rack



### CHARACTERISTICS

- Material: 304 stainless steel
- Dim. (single towel rail): 647 (L) x 80 (D) mm
- Dim. (double towel rail): 652 (L) x 130 (D) mm
- Dim. (towel rack): 647 (L) x 125 (H) x 245 (D) mm

## HOOKS

REF 8 99 1438  
Single Hook



REF 8 99 1439  
Double Hook



### CHARACTERISTICS

- Single hook:
- Material: 304 stainless steel
  - Dim.: 56 (L) x 60 (D) mm
- Double hook:
- Material: brass
  - Dim.: 87 (L) x 55 (D) mm

## ECLIPS MIRRORS



REF 8 66 610  
Eclips Illuminated  
Square Black -  
Tubular chrome  
brass arm



REF 8 66 965  
Eclips Illuminated  
Square Black - Flat  
chrome brass arm



### PRODUCT ADVANTAGES

- No electrical connection required
- Magnification x3
- LED lighting

### CHARACTERISTICS

- Runs on a standard (3.6 V) lithium battery (included)
- Activated by a sensory system
- Timer: 3 minutes
- Battery life: ~ 5 years
- Magnifying reflection x3
- Dim. (flat arm): 180 (L) x 195 (H) x 80/230 (D) mm
- Dim. (tubular arm): 180 (L) x 285 (H) x 65/330 (D) mm

## TOILET ROLL DISPENSERS

REF 8 99 1443  
Toilet Roll Dispenser



REF 8 99 1444  
Toilet Roll Dispenser  
with Reserve



REF 8 99 620  
Metal Toilet Roll  
Dispenser



REF 8 99 619  
Metal Toilet  
Roll Dispenser  
White

### CHARACTERISTICS

- Toilet roll dispenser:
- Material: 304 stainless steel
  - Dim.: 180 (L) x 90 (D) mm
- Toilet roll dispenser with reserve:
- Material: 304 stainless steel
  - Dim.: 175 (H) x 90 (D) mm
- Metal toilet roll dispenser:
- Material: brushed stainless steel or white epoxy
  - Dim.: 130 (L) x 104 (H) x 130 (D) mm

## TOILET BRUSHES

REF 8 99 1063  
Toilet Brush with  
brushed stainless  
steel wall support



REF 8 99 796  
Toilet Brush with  
brushed stainless  
steel support



### PRODUCT ADVANTAGES

- 304L stainless steel
- Non-slip plastic base protecting the floor

### CHARACTERISTICS

- Install on floor or mount on wall
- Dim. (exterior): 104 (Ø) x 275 (H) mm
- Dim. (inner container): 85 (Ø) x 105 (H) mm



# ***BINS***

# BINS

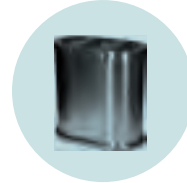
## A BIN FOR EVERY SPACE



**P. 49**  
Offices



**P. 50**  
Washrooms



**P. 52**  
Common areas



**P. 55**  
Kitchens

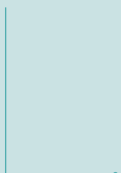
## WASTE SORTING

Sorting recyclable waste at the source has been an obligation since 1 July 2016 (French Decree 2016-288 of 10 March 2016 implementing the Energy Transition for Green Growth Act).



## SORTING FLOWS OF PAPER, METAL, PLASTIC, GLASS AND WOOD IS COMPULSORY

For whom?  
For companies, shops and administrations which entrust their waste to a private company or which generate more than 1,100 litres of waste per week and which use a public waste collection service.



## SORTING OFFICE PAPER AT THE SOURCE IS COMPULSORY.

**1 JULY 2016**

For organizations with 100 or more administrative jobs

**1 JANUARY 2017**

For organizations with 50 or more administrative jobs

**1 JANUARY 2018**

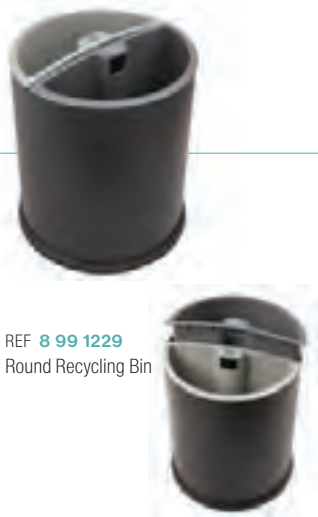
For organizations with 20 or more administrative jobs

# OFFICE BINS



## **SORTING BIN WITH 2 CONTAINERS**

**NEW** 10 LITRES



REF 8 99 1229  
Round Recycling Bin

### PRODUCT ADVANTAGES

- 10 L capacity
- Rubber protection at base
- Water and rust resistant inner containers

### CHARACTERISTICS

- Material: painted metal or stainless steel
- Capacity: 10 L
- 2 compartments of 5 L each

Dimensions and capacity:  
- Round:  
225 (Ø) x 270 (H) mm / 10 L

## **SORTING BIN**

13 LITRES



REF 8 99 1086  
Sorting Bin Black with 3 Coloured Containers

REF 8 99 881  
Sorting Bin Black with 3 Black Containers

REF 8 99 1031  
Sorting Bin Brushed Stainless Steel with 3 Black Containers



### PRODUCT ADVANTAGES

- Unique design for sorting small waste
- 6 stickers included
- Easy to empty thanks to integrated handles

### CHARACTERISTICS

- Rubber protection at the base to prevent scratching the floor
- Capacity: 3 x 3.3 L
- Outer colours: Black or Brushed Stainless Steel
- Removable containers (black or colours)
- Dim.: 245 (Ø) x 300 (H) mm

## **SORTING BIN WITH 2 CONTAINERS**

14 LITRES



REF 8 99 1261  
Rectangular Sorting Bin with 2 Containers

### PRODUCT ADVANTAGES

- Easy to empty (2 containers)
- Robust (steel outer container)

### CHARACTERISTICS

- Outer containers of epoxy steel
- Inner containers of polypropylene

Dimensions and capacity:  
- Rectangular:  
270 (L) x 290 (H) x 210 (D) mm / 14 L

## **BIN + SORTING CONTAINER**

6 / 25 LITRES



REF 8 99 1422  
Bin 25 L Blue

REF 8 99 1496  
Sorting Container 6 L

### PRODUCT ADVANTAGES

- Tight 6 L container for waste and 25 L container for paper

## **RECTANGULAR BIN**

6.6 / 13.2 LITRES



REF 8 99 1420  
Rectangular Bin 6.6 L

REF 8 99 1421  
Rectangular Bin 13.2 L

### CHARACTERISTICS

- Material: plastic
- Scratch resistant and easy to clean

## **WASTE BIN**

10 LITRES



REF 8 99 545  
Perforated Bin  
10 L Mirror Stainless Steel



REF 8 99 1007  
Waste Bin  
10 L Double Wall Satin Stainless Steel



REF 8 99 546  
Waste Bin  
10 L Double Wall Black Powder Coated Finish



REF 8 99 1087  
Waste Bin  
10 L Single Wall Black Leatherette Finish



REF 8 99 1088  
Waste Bin  
10 L Single Wall Leather

### PRODUCT ADVANTAGES

- Contemporary design

### CHARACTERISTICS

- Perforated bin:
- Can be used as a laundry bin
  - Rubber protection at the base to prevent scratching the floor
  - Colour: Mirror Stainless Steel
  - Dim.: 200 (Ø) x 297 (H) mm

- Waste bin:
- Double wall system to conceal the bag and hold it in place
  - Colours: Black, Satin Stainless Steel, Leatherette
  - Available with double walls for the Black and Satin Stainless Steel models
  - Dim.: 225 (Ø) x 275 (H) mm

# WASHROOM BINS

## HALF-MOON WALL-MOUNTED BIN

20 / 40 LITRES



REF 8 99 1419  
Half-moon Wall-mounted  
Bin 40 L Black

REF 8 99 1417  
Half-moon Wall-mounted  
Bin 40 L White

REF 8 99 1418  
Half-moon Wall-  
mounted Bin 20 L  
Black

REF 8 99 1416  
Half-moon Wall-mounted  
Bin 20 L White

### PRODUCT ADVANTAGES

- Easy to mount
- Easy to empty
- Non-cutting edge
- Wall mount included

### CHARACTERISTICS

- Material: painted epoxy steel
- Choice of 2 colours: Black or White
- Dim. (20 L): 350 (L) x 190 (D) x 495 (H) mm
- Dim. (40 L): 400 (L) x 210 (D) x 660 (H) mm

## WALL-MOUNTED BIN

40 LITRES



REF 8 99 1450  
Wall-mounted Bin 40 L  
White



**EASY**  
TO INSTALL WITH THE WALL  
MOUNTING SYSTEM

### PRODUCT ADVANTAGES

- Easy to install with the wall mounting system
- Wall mount included

### CHARACTERISTICS

- Bin material: polypropylene
- Wall mount material: epoxy
- Capacity: 40 L
- Dim. (container): 450 (L) x 610 (H) x 370 (D) mm
- Dim. (lid): 455 (L) x 175 (H) x 330 (D) mm

# WASHROOM BINS

## ROUND PEDAL BIN

3 / 5 / 12 / 20 / 30 LITRES



REF 8 99 432  
Pedal Bin 3 L  
White

REF 8 99 433  
Pedal Bin 5 L  
White

REF 8 99 434  
Pedal Bin 12 L  
White

REF 8 99 820  
Pedal Bin 20 L  
White

REF 8 99 997  
Pedal Bin 30 L  
White



REF 8 99 435  
Pedal Bin 3 L  
Mirror Stainless  
Steel

REF 8 99 436  
Pedal Bin 5 L  
Mirror Stainless  
Steel

REF 8 99 437  
Pedal Bin 12 L  
Mirror Stainless  
Steel

REF 8 99 821  
Pedal Bin 20 L  
Mirror Stainless  
Steel

REF 8 99 998  
Pedal Bin 30 L  
Mirror Stainless  
Steel



**PRACTICAL**  
PLASTIC CONTAINER MAKES  
IT EASY TO CLEAN

### PRODUCT ADVANTAGES

- Plastic inner container
- Smooth material, very easy to clean
- Wide range of capacities 3-30 L

### CHARACTERISTICS

- Material:  
Metal exterior  
Plastic inner container
- Rubber protection at the base against scratching the floor and detergents
- Increased mobility thanks to its handle
- Robust opening mechanism:  
100% metal
- Floor grip reinforced by two rubber pads
- Colours: White or Mirror Stainless Steel (18/0)
- Dim. (3 L): 167 (Ø) x 270 (H) mm
- Dim. (5 L): 203 (Ø) x 284 (H) mm
- Dim. (12 L): 284 (Ø) x 400 (H) mm
- Dim. (20 L): 292 (Ø) x 445 (H) mm
- Dim. (30 L): 292 (Ø) x 640 (H) mm

## SWING TOP

10 / 25 / 50 LITRES



REF 8 99 1085  
Swing Top 50 L White

REF 8 99 1084  
Swing Top 25 L White

REF 8 99 1083  
Swing Top 10 L White



**PRACTICAL**  
SWING TOP

### PRODUCT ADVANTAGES

- Suitable for any indoor location
- Good price-quality ratio
- Swing top
- Easy to empty

### CHARACTERISTICS

- Material: polypropylene
- Capacity: 0.8, 25 and 50 L:
- Colours: White
- Dim. (10 L): 246 (L) x 373 (H) x 198 (D) mm
- Dim. (25 L): 346 (L) x 511 (H) x 278 (D) mm
- Dim. (50 L): 406 (L) x 668 (H) x 340 (D) mm

## LADYBOX



REF 8 99 865  
Ladybox



**HYGIENIC**  
OPENS WITH A FOOT PEDAL

### PRODUCT ADVANTAGES

- Robust
- Narrow shape suited to space in a washroom
- Hygienic opening: thanks to a pedal to avoid all direct contact
- Tight waste deposit area
- Easy to clean

### CHARACTERISTICS

- Capacity: 20 L (50 L bag)
- Material: polypropylene (for intensive usage)
- Colours: Grey (lid) / White (recovery container)
- Retaining ring for the bag inside the container
- Dim. (10 L): 480 (L) x 415 (H) x 175 (D) mm

# COMMON AREA BINS

## ***SORTING BIN***



REF 8 99 1005  
Sorting Bin Brushed  
Stainless Steel



REF 8 99 1080  
Sorting Bin Black Epoxy

**40 LITRES**

### **PRODUCT ADVANTAGES**

- Compact sorting solution (offices and bedrooms)
- 3 removable compartments of galvanized steel
- Easy to empty
- Stickers included

### **CHARACTERISTICS**

- Material: painted metal or stainless steel
- Capacity: 40 L
- 2 compartments of 10 L each
- 1 compartments of 20 L
- Colours: Black Epoxy or Brushed Stainless Steel
- Dim.: 335 (Ø) x 470 (H) mm

## ***SORTING BIN***



REF 8 99 1081  
Sorting Bin 60 L Brushed  
Stainless Steel



REF 8 99 1004  
Sorting Bin 60 L Black



**PRACTICAL**  
GALVANIZED STEEL  
CONTAINER WITH HANDLE

**60 LITRES**

### **PRODUCT ADVANTAGES**

- Compact sorting solution
- Easy to empty with its 3 removable compartments of galvanized steel
- Stickers included to identify the purpose of each container

### **CHARACTERISTICS**

- Material: painted metal or stainless steel
- Capacity: 60 L
- 2 compartments of 15 L each
- 1 compartments of 30 L
- Colours: Black Epoxy or Brushed Stainless Steel
- Dim.: 355 (Ø) x 670 (H) mm

## ***BATTERY RECYCLING BIN***



REF 8 99 1429  
Battery Recycling Bin  
37 L



REF 8 99 1428  
Battery Recycling Bin  
12 L



**SILENT**  
THANKS TO PADDING AT THE  
BOTTOM

**12 / 37 LITRES**

### **PRODUCT ADVANTAGES**

- Silent thanks to padding at the bottom
- Locks with a key (included)
- Stickers included

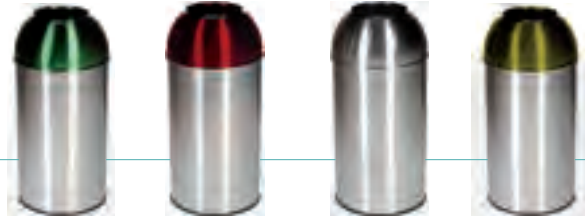
### **CHARACTERISTICS**

- Material: recyclable plexiglass
- Capacity: 12 or 37 L
- Dim.: (12 L): 250 (Ø) x 250 (H) mm
- Dim.: (37 L): 250 (Ø) x 750 (H) mm
- Opening: 11 x 3.8 cm

# COMMON AREA BINS

## OPEN DOME SORTING BIN

**40 LITRES**



REF 8 99 1423  
Open Dome Bin  
40 L Green

REF 8 99 1427  
Open Dome Bin  
40 L Red

REF 8 99 1426  
Open Dome Bin  
40 L Stainless  
Steel

REF 8 99 1425  
Open Dome Bin  
40 L Yellow

REF 8 99 1424  
Open Dome Bin  
40 L Blue

### PRODUCT ADVANTAGES

- Coloured tops to help identify what goes where
- 5 colours: Stainless Steel, Green, Blue, Red and Yellow
- Rubber protection at the base to prevent scratches

### CHARACTERISTICS

- Material: outer bin of brushed stainless steel; inner container of galvanized steel
- Removable open dome lid
- Dim.: 350 (Ø) x 740 (H) mm

## PUSH BIN

**40 LITRES**



REF 8 99 538  
Push Bin 40 L  
Black

REF 8 99 539  
Push Bin 40 L  
Mirror Stainless Steel



**PRACTICAL**  
GALVANIZED INNER  
CONTAINER WITH HANDLE  
(INCLUDED)

### PRODUCT ADVANTAGES

- Opens and automatically closes with a reinforced push door of polished stainless steel
- Rubber ring at the base to protect against scratching the floor and detergents

### CHARACTERISTICS

- Suitable for use indoors and in protected outdoor locations
- Inner container of galvanized metal fitted with a handle
- Capacity: 40 L
- Colour: Black or Mirror Stainless Steel
- Dim.: 345 (Ø) x 785 (H) mm

## SORTING STATION

**150 LITRES**



REF 8 99 1431  
Waste Sorting Station  
Transparent

REF 8 99 1432  
Waste Sorting Station  
Grey

REF 8 99 1433  
Waste Sorting  
Station Stainless  
Steel

REF 8 99 1430  
Waste Sorting Station  
Black

### PRODUCT ADVANTAGES

- Refined design for a large capacity sorting solution
- Easy to empty using its 3 inner containers of galvanized steel or its bin bag holders
- Stickers included to identify the purpose of each container

### CHARACTERISTICS

- Material: painted epoxy metal (8 99 1430 and 8 99 1432), 201 stainless steel (8 99 1433), metal & acrylic (8 99 1431)
- Capacity: 150 L
- 2 compartments of 40 L each
- 1 compartments of 70 L
- Dim.: 822 (L) x 850 (H) x 452 (D) mm

# COMMON AREA BINS

## ***SORTING BIN***



Bottles / Cups / Cans  
Opening: 10.5 x 10.5 cm



REF 8 99 1102  
Sorting Lid Yellow

Bottles / Cups / Cans  
Opening: Ø 12 cm



REF 8 99 1100  
Sorting Lid Green

Bottles / Cups / Cans  
Opening: Ø 12 cm



REF 8 99 1101  
Sorting Lid Blue

Paper  
Opening: 3 x 23 cm



REF 8 99 1103  
Sorting Lid Paper Blue

Other waste

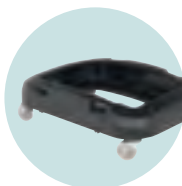


REF 8 99 1099  
Sorting Lid Grey

Other waste



REF 8 99 1104  
Push Sorting Lid



REF 8 99 1105  
Plastic Dolly

**PRACTICAL**  
PLASTIC DOLLY FOR 60 & 80 L  
SORTING BINS



REF 8 99 1106  
Locking System

**SECURE**  
LOCKING SYSTEM FOR 60 &  
80 L SORTING BINS

**60 / 80 LITRES**

### PRODUCT ADVANTAGES



Commercial offer by batch



6 sorting stickers included



Multiple combinations:  
The lids are suited to the waste types

The containers come in

→ **Contact us**

### CHARACTERISTICS

- Material: polypropylene
- Capacity: 60 or 80 L
- Dollies and lid locking systems available for this range of sorting bins
- Dim. (60 L): 320 (L) x 580 (H) x 460 (D) mm
- Dim. (80 L): 320 (L) x 762 (H) x 460 (D) mm
- Dolly: 480 (L) x 15 (H) x 355 (D) mm

Sorting bins

**80 L**

**60 L**

+



REF 8 99 1098  
Sorting Bin 80 L  
without lid

REF 8 99 1097  
Sorting Bin 60 L  
without lid

# KITCHEN BINS

## CONTAINER



Container White

**30 / 45 / 70 / 90 LITRES**

### PRODUCT ADVANTAGES

- Comes pre-assembled
- 6 sorting stickers included
- Multiple combinations:  
The lids come in  
  - 
  - 
  - 
  - 
  -
 The containers come in  
  - 
  - 
  - 
  -
 → **Contact us**

### CHARACTERISTICS

- Compatible with the HACCP protocol
- Made of polypropylene for intensive usage
- Auto close lid
- On the 90 L model, a ring in front of the pedal reinforces the bin's stability
- Built-in casters (90 L model only)
- Dim. (30 L): 400 (L) x 435 (H) x 410 (D) mm
- Dim. (45 L): 400 (L) x 600 (H) x 410 (D) mm
- Dim. (70 L): 410 (L) x 675 (H) x 500 (D) mm
- Dim. (90 L): 410 (L) x 820 (H) x 500 (D) mm

		90 L	70 L	45 L	30 L
White Lid	○	REF 8 99 618	REF 8 99 1092	REF 8 99 739	REF 8 99 748
Blue Lid	●	REF 8 99 743	REF 8 99 1090	REF 8 99 740	REF 8 99 750
Yellow Lid	●	REF 8 99 744	REF 8 99 1094	REF 8 99 741	REF 8 99 751
Green Lid	●	REF 8 99 745	REF 8 99 1091	REF 8 99 742	REF 8 99 752
Red Lid	●	REF 8 99 777	REF 8 99 1093	REF 8 99 779	REF 8 99 778

## PEDAL BIN BAG HOLDER

**110 LITRES**

### PRODUCT ADVANTAGES

- Silent foot pedal
- Resistant: 304 stainless steel
- 2 casters at the back to simplify mobility with a breaking system

### CHARACTERISTICS

- Comes as a kit: ready to assemble
- Made of stainless steel (18/0 or 304) and rubber
- Reinforced stability with 4 legs
- Assisted opening and closing
- Bag held in place with a rubber band
- Finish: Chrome
- Dim. (8 99 882): 550 (L) x 940 (H) x 425 (D) mm
- Dim. (8 99 1075): 590 (L) x 1000 (H) x 430 (D) mm

REF 8 99 882  
Bin Bag Holder  
18/0 Stainless  
Steel

+ REF 8 99 1075  
Bin Bag Holder  
304 Stainless  
Steel



**FITTED**  
WITH 2 CASTERS AT THE  
BACK WITH BRAKES



# ***ASHTRAYS***

# ASHTRAYS

JVD's ashtrays are **robust** thanks to their thick walls, treated for **outdoor use** and UV resistant. They are **practical** and easy to empty as they are fitted with inner containers as well as an **anti-vandalism** lock. Each ashtray comes with a **kit to install it** on the wall or in the ground.

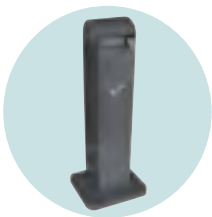
## WALL-MOUNTED ASHTRAYS

Wall-mounted ashtrays are to be fixed to the wall. Made of painted steel or stainless steel, they are very discreet and work great anywhere thanks to their compact size.



## STANDING ASHTRAYS

Standing ashtrays are set up directly on the ground, where they can be fixed or not so they can be moved. Whether made of painted steel or stainless steel, their delicacy adds a touch of elegance to your smoking areas.



## FRENCH DECREE 2015-337

In Paris and most other cities and towns in France, the fight for cleanliness has become a priority. As a result, people who drop litter on public roads may receive a €68 ticket. Establishments which are open to the public are therefore motivated to provide solutions: ashtrays, bins and combinations of the two can help contribute to meeting this policy. Additionally, regulations on sidewalk cafés have become stricter. Because of this, many sidewalk café charters have been put in place or updated to compel owners to provide ashtrays to their customers.

## ASHTRAYS WITH BINS

Ashtrays with bins can save space while keeping your outdoor areas clean. They allow employees and visitors to throw out waste like cups and packaging.



# ASHTRAYS

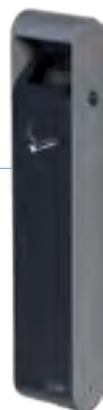
## WALL-MOUNTED ASHTRAYS



REF 8 99 501  
Wall-mounted  
Ashtray 1.5 L



REF 8 99 502  
Wall-mounted  
Ashtray 3 L



REF 8 99 1452  
Slim Wall-mounted  
Ashtray 3 L

REF 8 99 1170  
Wall-mounted Ashtray 3 L +  
Integrated 14 L Collector

+ REF 8 99 1451  
Base and Stand for  
Slim Wall-mounted  
Ashtray 3 L



**ANTI-VANDALISM**  
KEY LOCKING SYSTEM



**READY TO  
INSTALL**  
MOUNTING KIT INCLUDED

### PRODUCT ADVANTAGES

- Designed for outdoor use
- Protected against the rain
- Fast and easy to empty
- Easy to clean smooth surface

### CHARACTERISTICS

- Inner container of galvanized steel
- Galvanized steel and epoxy exterior for better corrosion resistance
- UV-treated coating
- Grained texture to prevent scratching
- Stubbing area made of stainless steel
- Key locking system
- Mounting kit included

### Capacities and dimensions:

#### 8 99 501:

- 1.5 L (150 butts with a 0.5 L container)
- 150 (L) x 255 (H) x 60 (D) mm

#### 8 99 502:

- 3 L (300 butts with a 0.5 L container)
- 191 (L) x 355 (H) x 60 (D) mm

#### 8 99 1170:

- 3 L (900 butts) + collector: 14 L
- 300 (L) x 670 (H) x 140 (D) mm

#### 8 99 1452:

- 3 L (900 butts)
- 100 (L) x 500 (H) x 64 (D) mm

#### 8 99 1451:

- 250 (L) x 990 (H) x 200 (D) mm

## TOTEM WALL-MOUNTED ASHTRAYS



REF 8 99 1002  
Tubular Ashtray Mirror  
Stainless Steel 1.8 L



REF 8 99 1076  
Tubular Ashtray Mirror  
Stainless Steel 1.7 L  
with Protective Roof



REF 8 99 987  
Tubular Ashtray  
Aluminium 2.4 L

REF 8 99 1000  
Tubular Ashtray  
Aluminium 3.4 L



**PRACTICAL**  
EASY TO EMPTY

### PRODUCT ADVANTAGES

- Designed for protected outdoor use
- Very attractive with a brushed or shiny finish
- Fast and easy to install
- Fire resistant

### CHARACTERISTICS

#### Material:

- Brushed aluminium: 8 99 987 & 8 99 1000
- Shiny stainless steel: 8 99 1002 & 8 99 1076
- Key locking system
- Mounting kit included

#### Capacities and dimensions:

#### 8 99 1002:

- Ashtray 1.8 L (540 butts)
- 76 (Ø) x 460 (H) mm

#### 8 99 1076:

- Ashtray 1.7 L (510 butts)
- 76 (Ø) x 460 (H) mm

#### 8 99 987:

- Ashtray 2.4 L (720 butts)
- 80 (Ø) x 480 (H) mm

#### 8 99 1000:

- Ashtray 3.4 L (1,020 butts)
- 80 (Ø) x 680 (H) mm

# ASHTRAYS

## ASHTRAYS WITH BINS



REF **8 99 1082**  
Ashtray 4.7 L and  
Container 48 L

REF **8 99 615**  
Ashtray 2 L and  
Container 8 L

REF **8 99 1062**  
Ashtray 3 L and  
Container 29 L



**PRACTICAL**  
ROBUST, EASY TO EMPTY  
GALVANIZED INNER CONTAINER

### PRODUCT ADVANTAGES

- Designed for outdoor use
- Protected against bad weather
- Fast and easy to empty

### CHARACTERISTICS

- Material: galvanized steel (rust and corrosion resistant)
- UV-treated coating
- Inner container of galvanized steel
- Stubbing area made of stainless steel
- Possibility of fixing to the ground
- Key locking system
- Ground fixing kit included
- Colour: Charcoal Grey

### Capacities and dimensions:

#### 8 99 1062:

- Ashtray 3 L (900 butts) + container 29 L
- 300 (L) x 990 (H) x 250 (D) mm

#### 8 99 1082:

- Ashtray 4.7 L (1,400 butts) + container 48 L
- 480 (L) x 990 (H) x 250 (D) mm

#### 8 99 615:

- Ashtray 2 L (600 butts) + container 8 L
- 400 (L) x 1040 (H) x 260 (D) mm

## ASHTRAYS WITH BINS



REF **8 99 1171**  
Ashtray 3.3 L and  
Container 24 L

REF **8 99 1172**  
Ashtray 5.9 L and  
Container 43 L

REF **8 99 1008**  
Ashtray 2.3 L and  
Container 20 L



**PRACTICAL**  
GALVANIZED INNER CONTAINER  
ROBUST AND EASY TO EMPTY

### PRODUCT ADVANTAGES

- Designed for outdoor use
- Protected against bad weather
- Fast and easy to empty
- Smooth, easy to clean surfaces

### CHARACTERISTICS

- Material: galvanized steel (rust and corrosion resistant)
- UV-treated coating
- Key locking system
- Ground fixing kit included
- Colour: Charcoal Grey

### Capacities and dimensions:

#### 8 99 1008:

- Ashtray 2.3 L (690 butts) + container 20 L
- 330 (L) x 895 (H) x 280 (D) mm

#### 8 99 1171:

- Ashtray 3.3 L (1,000 butts) + container 24 L
- 300 (L) x 960 (H) x 250 (D) mm

#### 8 99 1172:

- Ashtray 5.9 L (1,800 butts) + container 43 L
- 480 (L) x 960 (H) x 250 (D) mm

# ASHTRAYS

## TOTEM RECTANGULAR ASHTRAY



REF 8 99 503  
Standing Ashtray 12.5 L



**ROBUST**  
GALVANIZED INNER CONTAINER

### PRODUCT ADVANTAGES

- Designed for outdoor use
- Protected against the rain
- Fast and easy to empty
- Easy to clean smooth surface

### CHARACTERISTICS

- Inner container of galvanized steel
  - Stubbing area made of stainless steel (2 openings)
  - Galvanized steel and epoxy exterior for better corrosion resistance
  - UV-treated coating
  - Key locking system
  - Ground fixing kit (screws and bolts) included
  - Weighted base to ensure stability (7.4 kg)
- Capacities and dimensions:
- 2.5 L (3,750 butts)
  - 400 (L) x 1040 (H) x 400 (D) mm

## TOTEM TUBULAR ASHTRAY



REF 8 99 616  
Tubular Standing Ashtray 3 L



**ROBUST**  
GALVANIZED INNER CONTAINER

### PRODUCT ADVANTAGES

- Designed for outdoor use
- Fully galvanized, resistant to bad weather and UV rays
- Fast and easy to empty (container accessible from above)

### CHARACTERISTICS

- Inner container of galvanized steel
  - Stubbing area made of stainless steel (4 openings)
  - Galvanized steel and epoxy exterior for better corrosion resistance
  - UV-treated coating
  - Ground fixing kit (screws and bolts) included
  - Weighted base to ensure stability (6.5 kg)
- Capacities and dimensions:
- 3 L (900 butts)
  - 300 (Ø) x 1080 (H) mm

## TOTEM TUBULAR STAINLESS STEEL ASHTRAY



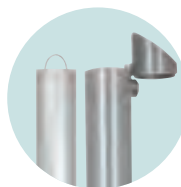
REF 8 99 1079  
Tubular Ashtray Mirror Stainless Steel 1.4 L on Stand



REF 8 99 1003  
Tubular Ashtray Mirror Stainless Steel 1.1 L on Stand with Protective Roof



REF 8 99 1001  
Tubular Ashtray Mirror Aluminium 4.5 L on Stand



**PRACTICAL**  
2 DIFFERENT EMPTYING SYSTEMS

### PRODUCT ADVANTAGES

- Designed for outdoor use
- Very attractive with a brushed or shiny finish
- Possibility of fixing to the ground

### CHARACTERISTICS

- Colours and materials:
- Brushed aluminium: 8 99 1001
  - Shiny 304 stainless steel: 8 99 1079 & 8 99 1003
  - Ground fixing kit (screws and bolts) included
- Capacities and dimensions:
- 8 99 1001: 4.5 L (1,350 butts) / 80 (Ø) x 900 (H) mm
  - 8 99 1079: 1.4 L (320 butts) / 76 (Ø) x 920 (H) mm
  - 8 99 1003: 1.1 L (330 butts) / 76 (Ø) x 920 (H) mm

A black and white photograph of a chef in a kitchen, looking down at his work. He is wearing a white chef's coat and a dark hat. The background is blurred, showing kitchen equipment and lights. A teal-colored rectangular overlay is present in the upper right corner of the image.

***FLYING INSECT  
KILLERS***

# FLYING INSECT KILLERS

For areas where food is prepared and/or handed over to consumers, Article 3 of the French order of 28 May 1997 and Article 3 of the order of 9 May 1995 specify that those areas must be free from any risk of contamination and define the obligation for protection against the presence of insect pests.

## WHICH INSECTS?

Flying insect killers are designed to attract and kill flying insects, particularly flies and mosquitoes but also midges, wasps, hornets, horseflies and more.

## WHERE SHOULD YOU INSTALL IT?

For optimal operation, your flying insect killer must be placed in a warm, dark place, sheltered from draughts and up in the air (whether mounted or hanging).



## OPERATING PRINCIPLE

A flying insect killer is an illuminated electrical device which attracts flying insects with ultraviolet A rays (harmless to people) and then either electrocutes them, traps them with glue or aspirates them.

## GLUE OR ZAPPER?

**Bug zappers** are non-polluting (no chemicals and no odours). They are safe (the high-voltage grids are always protected). Their recovery trays need to be emptied.

**Glue traps** are non-polluting (no chemicals and no odours). They are safe. They do not cause any crackling or throw off any insect parts. They are perfectly suited to places with significant hygiene constraints. Their glue strips need to be replaced on a regular basis.

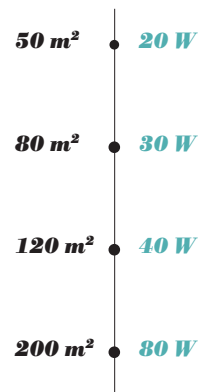
## IP54 INDEX DEVICES?

IP54 devices are suitable for **very humid environments**. They are protected against sprays of water.

## FRAGMENT RETENTION TUBES?

Unlike standard tubes, fragment retention tubes are covered with a **protective film** which avoids broken glass in the case of a blow. Fragment retention tubes are recommended for the agrifood industry in particular.

## WHAT POWER FOR WHAT SURFACE AREA?



# INDUSTRIE RANGE FLYING INSECT KILLERS

## INDUSTRIE PRO IP54

MADE IN FRANCE

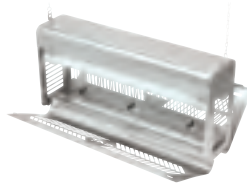


**APPROXIMATE  
PROTECTED  
AREA**

**80 W = 200 m<sup>2</sup>**

REF 8 55 1174  
Industrie Pro IP54  
Bug Zapper 80 W  
Fragment Retention

+ REF 2 20 0340  
Fragment  
Retention  
Tube 40 W



### PRODUCT ADVANTAGES

- Robust
- Suitable for humid environments: IP54
- Hang, place on a surface or mount on a wall
- Covers a large area
- Automatically shuts off when the grid is opened
- Standard fragment retention tubes

### CHARACTERISTICS

- Power supply: 230 V - 50 Hz
- Grid voltage and intensity: 3700 V - 9 mA
- Rated power: 60-100 W max
- 304L stainless steel
- Class I
- IP54
- 2 tubes included per device
- 2 year warranty
- Dim.: 630 (L) x 300 (H) x 155 (D) mm

## INDUSTRIE

MADE IN FRANCE



**APPROXIMATE  
PROTECTED AREA**

**40 W = 120 m<sup>2</sup>  
80 W = 200 m<sup>2</sup>**

REF 8 55 837  
Industrie Bug  
Zapper 40 W

REF 8 55 837 TAE  
Industrie Bug  
Zapper 40 W  
Fragment Retention  
Tubes

REF 8 55 838  
Industrie Bug  
Zapper 80 W

REF 8 55 838 TAE  
Industrie Bug  
Zapper 80 W  
Fragment Retention  
Tubes

REF 8 55 839  
Industrie Glue  
Trap 80 W

REF 8 55 839 TAE  
Industrie Glue Trap  
80 W  
Fragment Retention  
Tubes

### PRODUCT ADVANTAGES

- Robust
- Hang from the ceiling or mount on a wall
- Automatically shuts off when the grid is opened

### CHARACTERISTICS

- Power supply: 230 V - 50 Hz
- Grid voltage and intensity: 3700 V - 9 mA
- Rated power: 60-100 W max
- 304L stainless steel
- Class I
- IP20
- 2 tubes included per device
- 2 year warranty
- Dim.: 617 (L) x 280 (H) x 110 (D) mm

+ REF 2 20 0338  
Tube 20 W  
(for 855837)

REF 2 20 0089  
Fragment  
Retention Tube  
20 W  
(for 855837)

REF 2 20 0339  
Tube 40 W  
(for 855838)

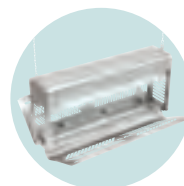
REF 2 20 0340  
Fragment  
Retention Tube  
40 W  
(for 855838)

REF 2 20 0339  
Tube 40 W  
(for 855839)

REF 2 20 0340  
Fragment  
Retention Tube  
40 W  
(for 855839)



REF 8 88 840  
Glue Strips 175 x  
610 mm (pack of 6)



**PRACTICAL  
OPENING SYSTEM MAKES IT  
EASY TO CLEAN**

## STANDARD RANGE

# FLYING INSECT KILLERS

## À LED

NEW

### PRODUCT ADVANTAGES

- Low energy consumption
- Very long life LED bulb
- Open 360° for maximum attraction

### CHARACTERISTICS

- Power supply: 220-240 V - 50-60 Hz
- Power: 13 W
- Class II
- Bulb type: LED
- Open 360°
- Place on the ground or hang
- Easy to clean insect recovery tray
- IP24
- Material: heat resistant ABS
- Voltage on the grid: 4000 V
- Dim. 475 (L) x 270 (D) x 105 (H) mm



REF 8 55 1598  
LED Bug Zapper

**APPROXIMATE  
PROTECTED  
AREA**  
80 m<sup>2</sup>

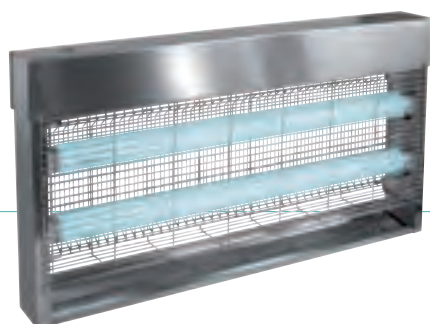
## STANDARD

### PRODUCT ADVANTAGES

- Hang from ceiling
- On/off switch

### CHARACTERISTICS

- Power supply: 230 V - 50 Hz
- 3 powers:  
2 x 15 W  
2 x 20 W  
2 x 40 W
- Grid voltage and intensity: 3800 V - 10 mA
- Power cord with plug (95 cm)
- Class I
- IP20
- 2 tubes included per device
- 2 year warranty
- Dim. 30 W: 515 (L) x 325 (H) x 70 (D) mm
- Dim. 40 & 80 W: 660 (L) x 365 (H) x 70 (D) mm



**APPROXIMATE  
PROTECTED  
AREA**  
30 W = 80 m<sup>2</sup>  
40 W = 120 m<sup>2</sup>  
80 W = 200 m<sup>2</sup>

#### BUG ZAPPER

#### SPARE BULB

	STANDARD	FRAGMENT RETENTION	STANDARD	FRAGMENT RETENTION
30 W	REF 8 55 625	REF 8 55 626	REF 2 20 0639	REF 2 20 0781
40 W	REF 8 55 627	REF 8 55 628	REF 2 20 0338	REF 2 20 0089
80 W	REF 8 55 629	REF 8 55 630	REF 2 20 0339	REF 2 20 0340

## À GLUE 30 W

### PRODUCT ADVANTAGES

- Place on a surface or mount on a wall
- Compact size makes it easy to move

### CHARACTERISTICS

- Power supply: 230 V - 50 Hz
- Power: 30 W
- Fuse accessible from the exterior
- Glossy white steel
- Power cord with plug (1.8 m)
- Class I
- IP20
- 2 tubes included per device
- 2 year warranty
- Dim.: 465 (L) x 285 (H) x 95 (D) mm



REF 8 55 524  
Glue Trap

REF 8 55 594  
Glue Trap  
Fragment  
Retention Bulbs

REF 8 88 525  
Glue Strips  
460 x 295 mm  
(pack of 10)

+ REF 2 20 0639  
Tube 15 W  
(for 855524)

REF 2 20 0781  
Fragment Retention  
Tube 15 W  
(for 855594)

**COMPACT RANGE**

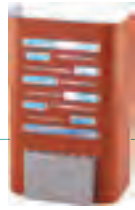
# FLYING INSECT KILLERS

## DÉCO GLUE TRAP 20 W

MADE IN FRANCE



REF 8 55 1292  
Deco Glue Trap 20 W  
Black



REF 8 55 1293  
Deco Glue Trap 20 W  
Red



REF 8 55 1291  
Deco Glue Trap 20 W  
White

**APPROXIMATE  
PROTECTED  
AREA**

**20 W = 50 m<sup>2</sup>**

+ REF 2 20 1887  
E14 Screw Tube Bulb

+ REF 8 88 1294  
Glue Strips  
(pack of 6)

**PRODUCT ADVANTAGES**

- Professional model
- Cost-effective
- Hang, place on a surface or mount on a wall

**CHARACTERISTICS**

- Power supply: 230 V - 50 Hz
- Power cord with plug (1.4 m)
- Class I - IP20
- Meets HACCP requirements
- Easy to change bulb
- 1 bulb included (20 W)
- **2 year warranty**
- Dim.: 165 (L) x 265 (H) x 113 (D) mm

## COMPACT BUG ZAPPER 20 W

MADE IN FRANCE



REF 8 55 1327  
Compact II Bug Zapper  
20 W Black



REF 8 55 1328  
Compact II Bug Zapper  
20 W Red



REF 8 55 1326  
Compact II Bug Zapper  
20 W White

**APPROXIMATE  
PROTECTED  
AREA**

**20 W = 60 m<sup>2</sup>**

+ REF 2 20 1887  
E14 Screw Tube Bulb

**PRODUCT ADVANTAGES**

- Model for small spaces
- Decorative design
- Hang, place on a surface or mount on a wall

**CHARACTERISTICS**

- Power supply: 230 V - 50 Hz
- Grid voltage and intensity: 3000 V - 5 mA
- Glossy black, white or red steel
- Power cord with plug (1 m)
- Class I - IP20
- 1 bulb included (20 W)
- **2 year warranty**
- Dim.: 160 (L) x 270 (H) x 130 (D) mm

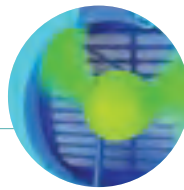
## DESINSECTOR 30 W

MADE IN FRANCE



REF 8 55 1360  
Desinsector  
(1 speed)

REF 8 55 1361  
Desinsector  
(2 speeds)



**APPROXIMATE  
PROTECTED  
AREA**

**30 W = 40 m<sup>2</sup>**

+ REF 2 20 2098  
Desinsector Tube

**INNOVATION**  
WITH NO GLUE OR ELECTRIC GRID,  
THE DESINSECTOR ASPIRATES  
INSECTS INTO ITS TRAP

**PRODUCT ADVANTAGES**

- Hygienic: no insect parts thrown off
- Eco-friendly: no chemical substances

**CHARACTERISTICS**

- Power supply: 230 V - 50 Hz
- Plastic cover
- Class I - IP20
- 1 tube included (30 W)
- **2 year warranty**
- Dim.: 245 (L) x 340 (H) x 220 (D) mm

## COMMERCE BUG ZAPPER 30 W



REF 8 55 078  
Professional Bug  
Zapper 30 W

+ REF 5 20 0337  
Tube 15 W  
(for 855078)

**APPROXIMATE  
PROTECTED  
AREA**

**30 W = 80 m<sup>2</sup>**

**PRODUCT ADVANTAGES**

- Price-quality ratio

**CHARACTERISTICS**

- Power supply: 230 V - 50 Hz
- Plastic cover
- Class I - IP20
- 2 tubes included (15 W)
- **2 year warranty**
- Dim.: 350 (L) x 230 (H) x 150 (D) mm



- 1 • **Trains** - IEP
- 2 • **Airports** - Palma de Mallorca
- 3 • **Restaurants** - McDonald's
- 4 • **Hotels** - Marina Bay Sands Hotel - Singapore
- 5 • **Stadiums** - Bordeaux
- 6 • **Shopping centres** - El Corte Inglés

# SOME OF OUR CLIENTS AROUND THE WORLD



Because we respect the environment, JVD prints this catalogue using plant-based inks on eco-friendly paper from sustainably managed forests. JVD invites our partners and clients to send us your email address so we can transmit this information to you directly in electronic form.

Non-binding document. JVD reserves the right to modify our products' characteristics without notice. French business registration no.: RCS 330 927 476.

Production: Liner Communication - Nantes - Printing: Imprimerie Vincent - Photos: Vue d'Ouest - Yves Blond - Jean-Claude Leveau - Eleven DR. Photos taken in a Porcelanosa showroom.

6

**JVD SAS**

3 rue des Brèches  
44406 Rezé Cedex, France  
Tel. +33 (0)2 40 75 98 20  
Fax +33 (0)2 40 75 01 23  
[jvd.fr](http://jvd.fr)

**France Sales Department**

Tel. + 33 (0)2 44 76 51 56  
[jvdfrance@jvd.fr](mailto:jvdfrance@jvd.fr)

**Export Sales Department**

Tel. + 33 (0)2 40 75 99 76/77  
Fax + 33 (0)2 40 75 56 70/76  
[jvdexport@jvd.fr](mailto:jvdexport@jvd.fr)

**Customer Service**

Tel. +33 (0)2 40 75 96 30  
[sav@jvd.fr](mailto:sav@jvd.fr)

**JVD Asia**

56 Loyang Way #06-04 - Loyang Enterprise Building -  
Singapore 508775  
Tel. + 65 6214 8550  
Fax + 65 6542 7533  
[jvd.com.sg](http://jvd.com.sg)  
[jvdasia@singnet.com.sg](mailto:jvdasia@singnet.com.sg)

**JVD España**

Calle Juan de Herrera 14, Elche Parque Industrial  
03203 Elche, Alicante, Spain  
Tel. + 34 965 677 777  
Fax + 34 965 663 721  
[jvd.es](http://jvd.es)

**JVD Americas**

Conjunto Quadrum, Acceso III, No. 16A, Int. 15A  
Oro. Parque Industrial Benito Juárez  
C.P. 76120 Santiago de Querétaro, Mexico  
Tel: + 52 442 161 2595

---

Your distributor's stamp

---



THE FRENCH TOUCH



**MODERN PLANT**

For more information about JVD or any other JVD product please contact Modern Plant. Our team of experts are on call to answer all your questions and provide you with advice to ensure your project is successful.

Web: [www.tapsandshowers.ie](http://www.tapsandshowers.ie) | Email: [sales@modernplant.ie](mailto:sales@modernplant.ie) | Tel: 01 461 4300